



### PRODUCT FOCUS -- Tools for the Diagnosis of Bladder Cancer

**Bladder Cancer Awareness Month – May 2026** – Bladder cancer is the sixth most common cancer in the U.S. and ninth worldwide, accounting for ~5% of new U.S. cancer cases annually. In 2026, an estimated 84,500 new cases and 17,800 deaths will occur in the U.S. Globally there were ~615,000 cases and 220,000 deaths reported in 2022. About 75% of cases occur in men. Most tumors arise in the bladder's inner lining and may progress to invasive or metastatic disease. Five-year survival rates are 96% for non-invasive tumors, 70% for localized disease, 34% for regional spread, and just 5% for distant metastases. High recurrence rates necessitate long-term surveillance, underscoring the need for improved therapies. *–CRI, ACS, AACR*

**Immunohistochemistry is essential** in bladder cancer diagnosis and prognosis, enabling precise tumor classification and differentiation from mimics. By detecting protein expression patterns (e.g., GATA3, CK7, CK20, p63), IHC supports accurate identification of urothelial origin and variant histologies. It also provides prognostic insight by correlating biomarker profiles with tumor aggressiveness, guiding treatment decisions and helping predict outcomes, including risk of progression and therapeutic response. **Zeta's portfolio of bladder cancer IVD antibodies are described below.**

Zeta Corporation offers recombinant RAbMono™ (Rabbit Monoclonal) and MonoMab™ (Mouse Monoclonal) recombinant IVD antibodies researched and developed for the anatomic pathology market for Immunohistochemistry. Zeta is incorporating highly sensitive technology to develop many of these primary antibodies that are target-validated and characterized for IHC on FFPE tissue sections. Zeta provides 400+ IVD antibodies for cancer screening and diagnosis.

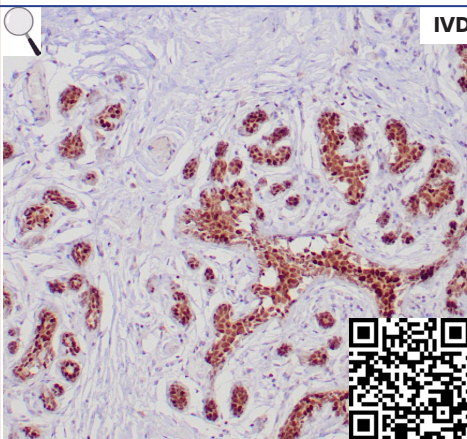
#### GATA3 (clone ZR358)

Recombinant. Among several other roles, GATA-3 is involved in luminal cell differentiation in the mammary gland and appears to control a set of genes involved in the differentiation and proliferation of breast cancer. GATA-3 expression is associated with the expression of estrogen receptor-alpha (ER) in breast cancer. GATA-3 is a novel marker for bladder cancer. The study showed that GATA-3 stained 67% of urothelial Carcinomas but none of the prostate or renal carcinomas. [\(more\)](#)

**Species:** Rabbit Monoclonal

**Cat#:** [Z2742](#)

**IHC:** Human breast ductal carcinoma stained with ZR358



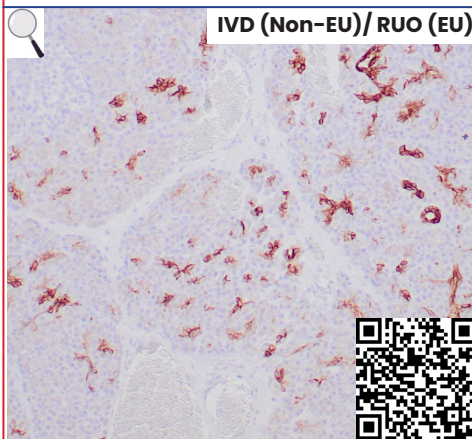
#### Cytokeratin 7 (clone ZR428)

Recombinant. Recognizes an intermediate filament protein identified as cytokeratin 7. Highly specific to cytokeratin 7 and shows no cross-reaction with other IFPs. Cytokeratin 7 is a basic cytokeratin, which is found in most glandular and transitional epithelia but not in the stratified squamous epithelia. Keratin 7 is expressed in the epithelial cells of ovary, lung, and breast but not of colon, prostate, or gastrointestinal tract. Highly useful in distinguishing ovarian carcinomas (keratin 7+) from colon carcinomas (keratin 7-).

**Species:** Rabbit Monoclonal

**Cat#:** [Z2784](#)

**IHC:** Human ovarian carcinoma stained with ZR428



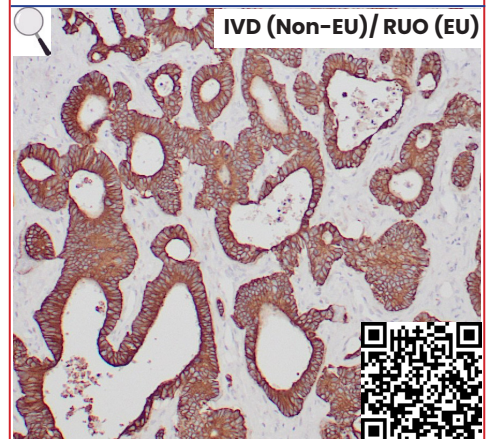
#### Cytokeratin 20 (clone ZR429)

Recombinant. Recognizes an intermediate filament protein of 46kDa, identified as cytokeratin 20 (CK20). CK20 is abundantly expressed in goblet cells and enterocytes of the gastrointestinal tract. It is a useful marker of pancreatic and colorectal cancer. CK20 is expressed under normal, hyperplastic and neoplastic conditions. It has been detected in adenocarcinomas of the colon, stomach and biliary tract. Breast carcinomas are generally non-reactive.

**Species:** Rabbit Monoclonal

**Cat#:** [Z2785](#)

**IHC:** Human normal colon stained with ZR175

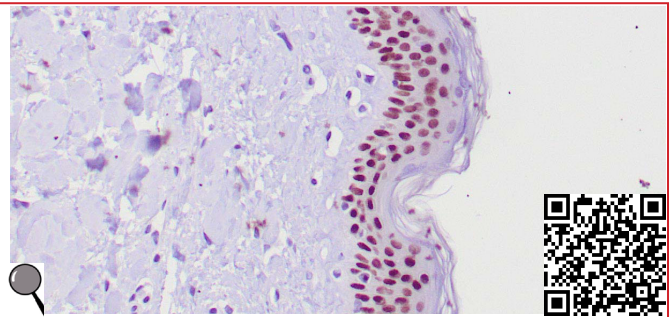


## p63 (clone ZM70)

IVD

Recombinant; p63 is identified in basal cells in the epithelial layers of a variety of tissues, including epidermis, cervix, urothelium, breast and prostate. p63 was detected in nuclei of the basal epithelium in normal prostate glands; however, p63 was not expressed in malignant tumors of the prostate. As a result, p63 has been reported as a useful marker for differentiating benign from malignant lesions in the prostate, particularly when used in combination with markers of high MW cytokeratins and the... [\(more\)](#)

**Species:** Monospecific Mouse Monoclonal **Cat#:** [Z2380](#)

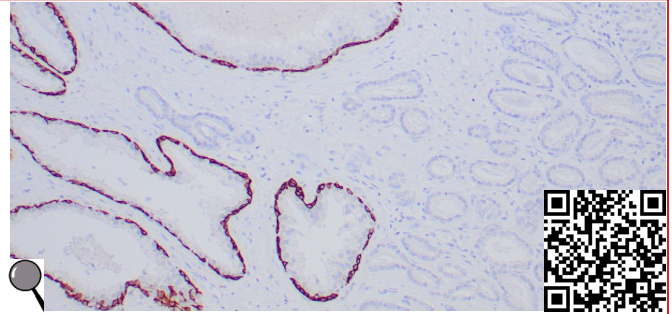


IHC: Human skin stained with ZM70.

## Cytokeratin 5/6 (clone ZR412) IVD (Non-EU)/ RUO (EU)

Recombinant; Recognizes Cytokerating 5 and 6, a useful aid for the classification of epithelioid mesotheliomas. Cytokeratin 5/6 share similar tissue distribution and are found in various proportions in many non-keratinizing stratified squamous epithelia, e.g., tongue mucosa, as well as in basal epithelia of the trachea, basal cells of the epidermis, hair follicles, sebaceous and sweat glands of the skin, luminal cells of the mammary gland, basal cells of the prostate, urothelium, vagina, and endocervical mucosa. [\(more\)](#)

**Species:** Rabbit Monoclonal **Cat#:** [Z2768](#)

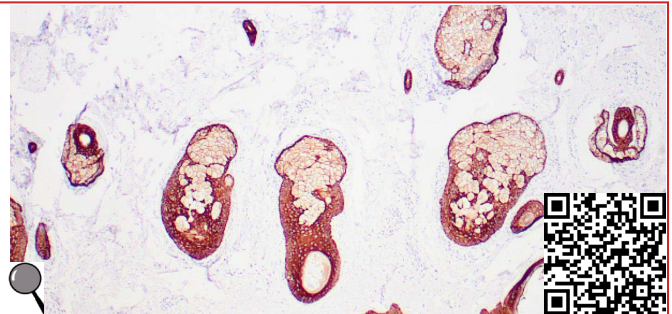


IHC: Human prostate carcinoma stained with ZR412.

## Cytokeratin, HMW (clone 34βE12) IVD

Recombinant; Recognizes cytokeratin 1, 5, 10, and 14 in the Moll catalog (MW 68kDa, 58kDa, 56.5kDa, and 50kDa), respectively. This antibody promises to be a specific marker useful in differential identification of squamous carcinomas from adenocarcinomas and differential diagnosis of benign and malignant tumors of prostatic gland. In normal cells, it labels squamous, ductal and other complex epithelia. It reacts with benign small-acinar lesions of the prostate and does not react with hepatocytes, pancreatic acinar cells... [\(more\)](#)

**Species:** Mouse Monoclonal **Cat#:** [Z2019](#)

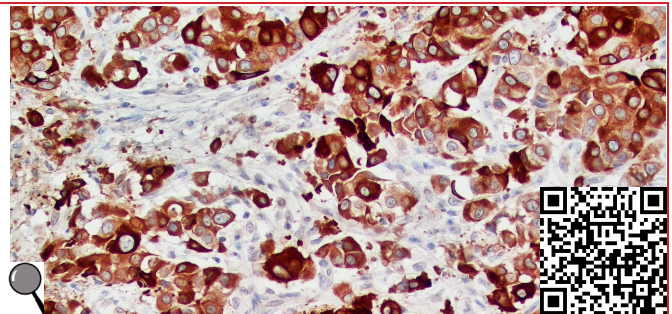


IHC: Human skin with carcinoma stained with 34βE12

## Uroplakin II (clone ZR477) IVD (Non-EU)/ RUO (EU)

Recombinant; Uroplakin II is a highly specific marker for urothelial differentiation and is positive in most primary urothelial carcinomas (including high-grade and invasive types) and retains expression even in poorly differentiated urothelial tumors. Additionally, Uroplakin II can help distinguish metastatic urothelial carcinoma from morphologically similar carcinomas (e.g., ovarian serous carcinoma, prostatic adenocarcinoma, colorectal adenocarcinoma) as it is more specific than GATA3 in certain settings, though less sensitive. [\(more\)](#)

**Species:** Rabbit Monoclonal **Cat#:** [Z2851](#)

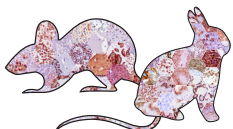


IHC: Human urothelial carcinoma stained with ZR477.

Related Antibodies	Clone	Species	Cat. #
CDX2	ZR215	Rabbit	<a href="#">Z2494</a>
Cytokeratin 20	Ks20.8	Mouse	<a href="#">Z2065</a>
Cytokeratin 20	ZM42	Mouse	<a href="#">Z2349</a>
Cytokeratin 5/6	D5/16B4	Mouse	<a href="#">Z2133</a>
Cytokeratin 7	OV-TL-12/30	Mouse	<a href="#">Z2067</a>
GATA-3	L50-823	Mouse	<a href="#">Z2227</a>
Her-2/neu	ZR218	Rabbit	<a href="#">Z2499</a>
Her-2/neu	ZR5	Rabbit	<a href="#">Z2025</a>

Related Antibodies	Clone	Species	Cat. #
Ki-67	MIB-1	Mouse	<a href="#">Z2305</a>
Ki-67	ZM67	Mouse	<a href="#">Z2377</a>
Ki-67	ZR433	Rabbit	<a href="#">Z2789</a>
NKX3.1	ZM95	Mouse	<a href="#">Z2395</a>
P40	ZR303	Rabbit	<a href="#">Z2733</a>
p40	ZR8	Rabbit	<a href="#">Z2004</a>
p53	DO-7	Mouse	<a href="#">Z2029</a>
p53	ZR153	Rabbit	<a href="#">Z2466</a>

Related Antibodies	Clone	Species	Cat. #
p63	4A4	Mouse	<a href="#">Z2003</a>
p63	ZR439	Rabbit	<a href="#">Z2795</a>
PD-L1	ZR3	Rabbit	<a href="#">Z2002</a>
PSA	ZR232	Rabbit	<a href="#">Z2710</a>
S-100P	ZR115	Rabbit	<a href="#">Z2419</a>
Thrombomodulin	ZM105	Mouse	<a href="#">Z2416</a>



**ZETA** Corporation

Website:  
Email:  
Phone (US):  
Fax (US):

zeta-corp.com  
info@zeta-corp.com  
(626) 355-2053  
(626) 836-9149