

Calretinin (ZM85)

Mouse Monoclonal Antibody

Specificity: Human. Others not tested

Immunogen: Recombinant human Calretinin (Calbindin 2) protein fragment (around aa23-242)

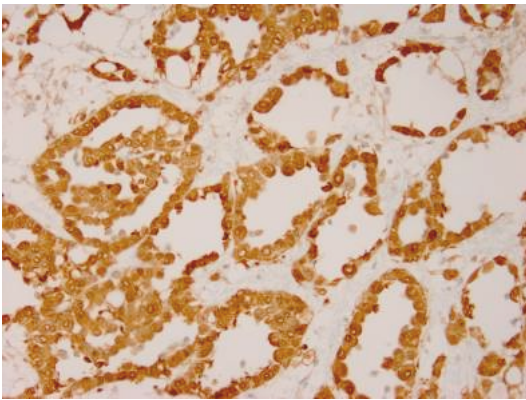
Ig Class: Mouse IgG1/κ

Storage: Store vial at 4°C. When stored at 2-8°C, this antibody is stable for 24 months.

Staining procedures: Use formalin-fixed and paraffin-embedded sections. *Retrieval conditions:* Pretreatment of deparaffinized tissue with heat-induced epitope retrieval is recommended. *Detection methods:* Polymer anti-mouse/rabbit Ig detection system. *Working dilution:* 1:100-2000; *Positive Control:* Mesothelioma; *Cellular Localization:* Cytoplasmic and nuclear; *Intended Use:* In Vitro Diagnosis (IVD).

Description: It recognizes a protein of about 29kDa, which is identified as Calretinin (also known as Calbindin 2). Calretinin is a vitamin D-dependent calcium-binding protein involved in calcium signaling. It is present in subsets of neurons throughout the brain and spinal chord, including sensory ganglia. Antibody to calretinin is useful in differentiating mesothelioma from adenocarcinomas of the lung. It also aids in differentiating adrenal cortical neoplasms from pheochromocytomas.

Supplied As: Purified antibody with 0.2% BSA and 15mM sodium azide.



References:

1. Doglioni C, et al. *Am J Surg Pathol.* 1996; 20:1037-46.
2. Augusto D, et al. *Appl Immunohistochem Mol Morphol.* 2002; 10:159-62.
3. Ordóñez NG. *Am J Surg Pathol.* 2003; 27:1031-51.

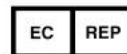
Formalin-fixed, paraffin-embedded human mesothelioma stained with anti-calretinin antibody using peroxidase-conjugate and DAB chromogen. Note cytoplasmic staining of mesothelioma cells

Cat. #Z2392 (1.0 ml)

ZETA Corporation
65 N 1st Ave, Ste 202C
Arcadia, CA 91006, USA
Tel: (626) 355-2053
<http://www.zeta-corp.com>



Zeta Corporation



Emergo Europe B.V.
Prinsessegracht 20
2514 AP The Hague
The Netherlands
Tel: +31 70 345 8570