

Calponin-1 (Clone EP798Y) Rabbit Monoclonal Antibody

Specificity: Human and Rat. Others not tested

Immunogen: A synthetic peptide corresponding to residues near the C-term of human calponin-1

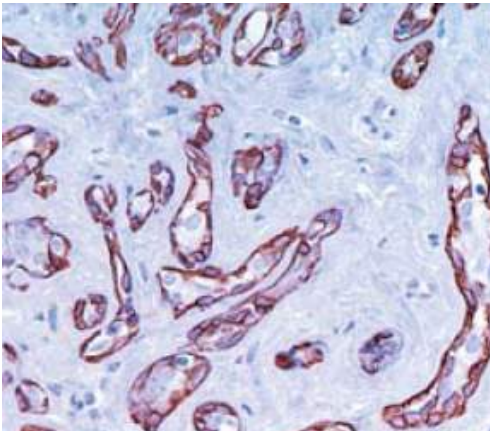
Ig Class: Rabbit IgG

Storage: Store vial at 4°C. When stored at 2-8°C, this antibody is stable for 24 months

Staining procedures: Use formalin-fixed and paraffin-embedded sections. *Retrieval conditions:* Pretreatment of deparaffinized tissue with heat-induced epitope retrieval is recommended. *Detection methods:* Polymer anti-mouse/rabbit Ig detection system. *Working dilution:* 1:50-200; *Positive Control:* Normal breast tissue; *Cellular Localization:* Cytoplasmic; *Intended Use:* In vitro Diagnosis (IVD).

Description: Calponin-1, a calmodulin, binds tropomyosin and F-actin and is thought to be involved in the regulation of smooth muscle contraction. The expression of calponin-1 is restricted to smooth muscle cells and is a marker of the differentiated contractile phenotype of developing smooth muscle. Two isoforms of calponin-1 exist whose molecular weights are 34kDa and 29kDa. Expression of the 29kDa form is primarily restricted to muscle of the urogenital tract. The expression of calponin-1 has also been demonstrated in myoepithelial cells from benign and malignant breast lesions.

Supplied As: Purified antibody with 0.2% BSA and 15mM sodium azide.



References:

1. Benson JR, et al. *CRC Press*, Jan 3, 2013.
2. Liu R, et al. *Gene*. 2016; 585:143-53.
3. Wang NP, et al. *Appl Immunohistochem*1998; 5:141-51.

Formalin-fixed, paraffin-embedded human benign breast tissue stained with anti-calponin-1 antibody using peroxidase-conjugate and DAB chromogen. Note cytoplasmic staining of myoepithelial cells

Cat. #Z2122 (1.0 ml)

ZETA Corporation
65 N 1st Ave, Ste 202C
Arcadia, CA 91006, USA
Tel: (626) 355-2053
<http://www.zeta-corp.com>



Zeta Corporation



Emergo Europe B.V.
Prinsessegracht 20
2514 AP The Hague
The Netherlands
Tel: +31 70 345 8570