
Caldesmon (EP19, as same as E89) Rabbit Monoclonal Antibodies

Specificity: Human. Others unknown

Immunogen: A synthetic phospho-peptide corresponding to residues surrounding Ser789 of human caldesmon

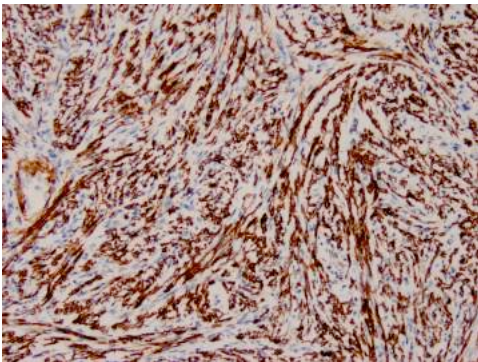
Ig Class: Rabbit IgG

Storage: Store vial at 4°C. When stored at 2-8°C, this antibody is stable for 24 months

Staining procedures: Use formalin-fixed and paraffin-embedded sections. *Retrieval conditions:* Pretreatment of deparaffinized tissue with heat-induced epitope retrieval is recommended. *Detection methods:* Polymer anti-mouse/rabbit Ig detection system. *Working dilution:* 1:50-100. *Positive Control:* Uterus, colon carcinoma. *Cellular Localization:* Cytoplasmic. *Intended Use:* In vitro Diagnosis (IVD).

Description: Caldesmon is a developmentally regulated protein involved in smooth muscle and non-muscle contraction. Two closely related variants of human caldesmon have been identified which differ in their electrophoretic mobility and cellular distribution. The *h*-caldesmon variant (120-150kDa) is predominantly expressed in smooth muscle whereas *l*-caldesmon (70-80kDa) is found in non-muscle tissue and cells. Neither of the two variants has been detected in skeletal muscle.

Supplied As: Purified antibody with 0.2% BSA and 15mM sodium azide.

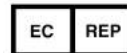
**References:**

1. Miettinen M, et al. *Arch Pathol Lab Med.* 2006; 130:1466-78.
2. Watanabe K, et al. *Hum Pathol.* 1999; 30:392-6.
3. Comin CE, et al. *Am J Surg Pathol.* 2006; 30:463-9.

Formalin-fixed, paraffin-embedded human uterus stained with anti-caldesmon antibody using peroxidase-conjugate and AEC chromogen. Note cytoplasmic staining of smooth muscle cells

Cat. #Z2142 (1.0 ml)

ZETA Corporation
65 N 1st Ave, Ste 202C
Arcadia, CA 91006, USA
Tel: (626) 355-2053
<http://www.zeta-corp.com>



Zeta Corporation

Emergo Europe B.V.
Prinsessegracht 20
2514 AP The Hague
The Netherlands
Tel: +31 70 345 8570