

Calcitonin (Clone EP92) Rabbit Monoclonal Antibody

Specificity: Human, Monkey, Mouse, Rat, Dog, Horse, Sheep and Pig. Others not tested

Immunogen: A synthetic peptide corresponding to residues in Human calcitonin

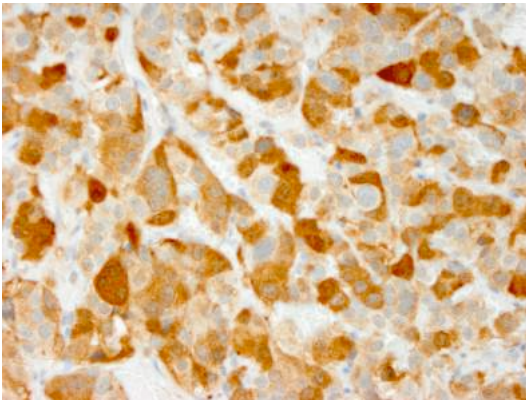
Ig Class: Rabbit IgG

Storage: Store vial at 4°C. When stored at 2-8°C, this antibody is stable for 24 months

Staining procedures: Use formalin-fixed and paraffin-embedded sections. *Retrieval conditions:* Pretreatment of deparaffinized tissue with heat-induced epitope retrieval is recommended. *Detection methods:* Polymer anti-mouse/rabbit Ig detection system. *Working dilution:* 1:50; *Positive Control:* Thyroid or medullary carcinoma. *Cellular Localization:* Cytoplasmic. *Intended Use:* In vitro diagnosis (IVD).

Description: Calcitonin is a 32 amino acid peptide which can be demonstrated in C cells of the normal and hyperplastic thyroid. Staining for calcitonin may be used for the identification of a spectrum of C cell proliferative abnormalities ranging from C cell hyperplasia to invasive tumors. Staining for calcitonin in medullary carcinoma of the thyroid produces a fine granular pattern in the cytoplasm. Amyloid deposits within the tumor may also exhibit varying degrees of calcitonin activity.

Supplied As: Purified antibody with 0.2% BSA and 15mM sodium azide.



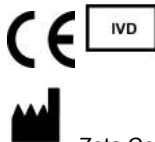
References:

1. Doglioni C, et al. *Am J Surg Pathol.* 1996; 20:1037-46.
2. Augusto D, et al. *Appl Immunohistochem Mol Morphol.* 2002; 10:159-62.
3. Ordóñez NG. *Am J Surg Pathol.* 2003; 27:1031-51.

Formalin-fixed, paraffin-embedded human thyroid medullary carcinoma stained with anti-calcitonin antibody using peroxidase-conjugate and DAB. Note cytoplasmic staining of tumor cells

Cat. #Z2523 (1.0 ml)

ZETA Corporation
65 N 1st Ave, Ste 202C
Arcadia, CA 91006, USA
Tel: (626) 355-2053
<http://www.zeta-corp.com>



Zeta Corporation



Emergo Europe B.V.
Prinsessegracht 20
2514 AP The Hague
The Netherlands
Tel: +31 70 345 8570