

c-myc (Clone EP121) Rabbit Monoclonal Antibody

Specificity: Human. Others-not tested

Immunogen: A synthetic peptide corresponding to residues in the N-terminus of human c- myc

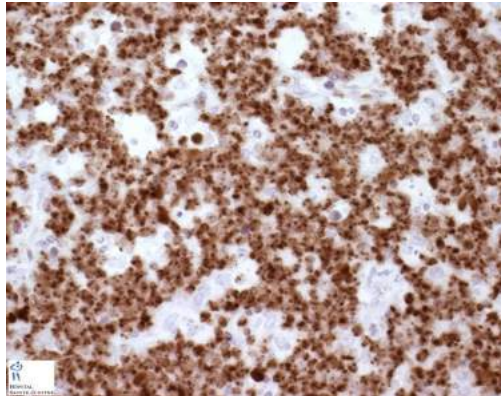
Ig Class: Rabbit IgG

Storage: Store vial at 4°C. When stored at 2-8°C, this antibody is stable for 24 months

Staining procedures: Use formalin-fixed and paraffin-embedded sections. *Retrieval conditions:* Pretreatment of deparaffinized tissue with heat-induced epitope retrieval is recommended. *Detection methods:* Polymer anti-mouse/rabbit IgG detection system. *Working dilution:* 1:100-200; *Positive Control:* Burkitt lymphoma. *Cellular Localization:* Nucleus and cytoplasmic. *Intended Use:* In vitro diagnosis (IVD).

Description: Oncogene-encoded proteins c-myc, N-myc, and L-myc function in cell proliferation, differentiation and neoplastic disease. Amplification of the *c-myc* gene has been found in several types of human tumors, the *N-myc* gene in neuroblastomas, and the *L-myc* gene in human small cell lung carcinomas. c-myc protein is a transcription factor localized to the nucleus of the cell. It seems to be involved in activating the transcription of growth related genes. c-myc binds to DNA during transcription as a heterodimeric complex with Max. c-myc is phosphorylated in vitro by p44/42 MAP kinase at Ser62 and in vivo at both Thr58 and Ser62. Mutation of Thr58 and Ser62 to Ala inhibits the ability of c-myc to activate transcription.

Supplied As: Purified antibody with 0.2% BSA and 15mM sodium azide.



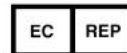
Formalin-fixed, paraffin-embedded human Burkitt lymphoma stained with anti-c-myc antibody using peroxidase-conjugate and DAB chromogen. Note the nuclear staining of tumor cells

Cat. #Z2258 (1.0 ml)

ZETA Corporation
65 N 1st Ave, Ste 202C
Arcadia, CA 91006, USA
Tel: (626) 355-2053
<http://www.zeta-corp.com>



Zeta Corporation



Emergo Europe B.V.
Prinsessegracht 20
2514 AP The Hague
The Netherlands
Tel: +31 70 345 8570