
β -Catenin (Clone EP35) Rabbit Monoclonal Antibody

Specificity: Human and mouse. Others-not tested

Immunogen: A synthetic peptide corresponding to residues near N-terminus of human β -catenin

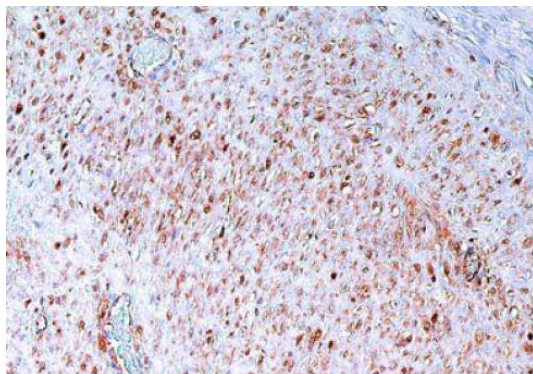
Ig Class: Rabbit IgG

Storage: Store vial at 4°C. When stored at 2-8°C, this antibody is stable for 24 months

Staining procedures: Use formalin-fixed and paraffin-embedded sections. *Retrieval conditions:* Pretreatment of deparaffinized tissue with heat-induced epitope retrieval is recommended. *Detection methods:* Polymer anti-mouse/rabbit IgG detection system. *Working dilution:* 1:50-100; *Positive Control:* Fibromatosis or transitional cell carcinoma. *Cellular Localization:* Membrane, cytoplasmic or nuclear. *Intended Use:* In vitro Diagnosis (IVD).

Description: Beta-catenin is a 92 kD protein normally found in the cytoplasm of the cell in the submembranous location. This protein is associated with E-cadherin and may be essential for the function of E-cadherin. Mutations in the Beta-catenin gene result in loss of membranous staining and nuclear accumulation of this protein. Nuclear accumulation of this protein has been demonstrated in desmoid-type fibromatosis lesions of the breast and abdomen and therefore is useful in differentiating this lesion from other spindle cell lesions that may occur in these locations. Nuclear accumulation of Beta-catenin has also been demonstrated in colorectal carcinoma.

Supplied As: Purified antibody with 0.2% BSA and 15mM sodium azide.



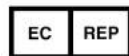
Formalin-fixed, paraffin-embedded human fibromatosis stained with anti-beta-catenin antibody using peroxidase-conjugate and DAB chromogen. Note nuclear staining of tumor cells

Cat. #Z2120 (1.0 ml)

ZETA Corporation
65 N 1st Ave, Ste 202C
Arcadia, CA 91006, USA
Tel: (626) 355-2053
<http://www.zeta-corp.com>



Zeta Corporation



Emergo Europe B.V.
Prinsessegracht 20
2514 AP The Hague
The Netherlands
Tel: +31 70 345 8570