

## WT-1 (Clone 6F-H2) Mouse Monoclonal Antibody

**Specificity:** Human. Others-not known

**Immunogen:** Purified WT protein

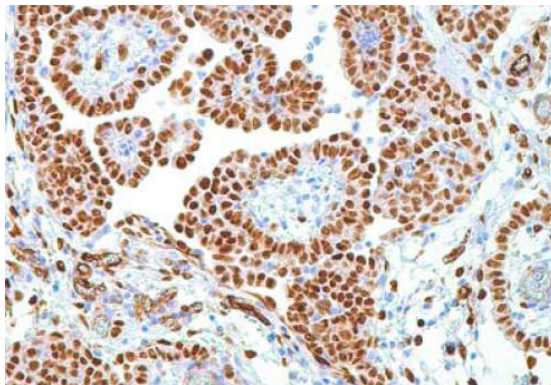
**Ig Class:** Mouse IgG1/ $\kappa$

**Storage:** Store vial at 4°C. When stored at 2-8°C, this antibody is stable for 24 months

**Staining procedures:** Use formalin-fixed and paraffin-embedded sections. *Retrieval conditions:* Pretreatment of tissue with proteolytic enzymes should be performed prior to staining. *Detection methods:* Polymer anti-mouse/rabbit Ig detection system. *Working dilution:* 1:100-200; *Positive Control:* Malignant mesothelioma, Wilms tumor. *Cellular Localization:* Nuclear. *Intended Use:* In vitro diagnosis (IVD).

**Description:** WT1 is a suppressor gene located on chromosome 11p13. Wilm's Tumor Protein (WT1) has been identified in proliferative mesothelial cells, malignant mesothelioma, ovarian cystadenocarcinoma, gonadoblastoma, nephroblastoma and desmoplastic small round cell tumor. Lung adenocarcinomas rarely stain positive with this antibody.

**Supplied As:** Purified antibody with 0.2% BSA and 15mM sodium azide.



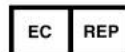
*Formalin-Fixed, paraffin-embedded human mesothelioma stained with anti-WT-1 antibody using peroxidase-conjugate and DAB chromogen. Note the nuclear staining of tumor cells*

Cat. #Z2124 (1.0 ml)

**ZETA** Corporation  
65 N 1<sup>st</sup> Ave, Ste 202C  
Arcadia, CA 91006, USA  
Tel: (626) 355-2053  
<http://www.zeta-corp.com>



Zeta Corporation



**Emergo Europe B.V.**  
Prinsessegracht 20  
2514 AP The Hague  
The Netherlands  
Tel: +31 70 345 8570