

## Villin (Clone CWWB1) Mouse Monoclonal Antibody

**Specificity:** Human. Others-not known

**Immunogen:** Human villin protein

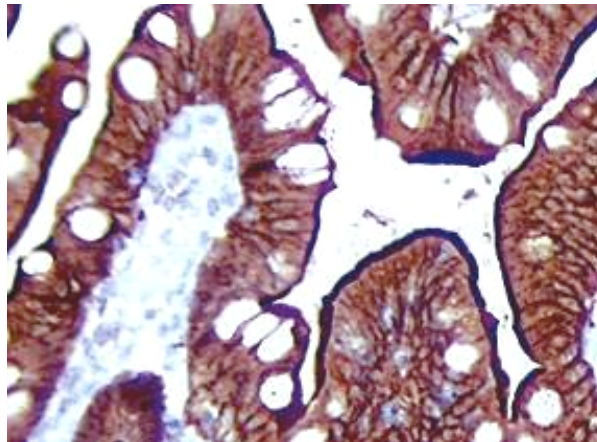
**Ig Class:** Mouse IgG1

**Storage:** Store vial at 4°C. When stored at 2-8°C, this antibody is stable for 24 months

**Staining procedures:** Use formalin-fixed and paraffin-embedded sections. *Retrieval conditions:* Pretreatment of deparaffinized tissue with heat-induced epitope retrieval is recommended. *Detection methods:* Polymer anti-mouse/rabbit Ig detection system. *Working dilution:* 1:50-200; *Positive Control:* Colon carcinoma, small intestine. *Cellular Localization:* Cytoplasmic. *Intended Use:* In vitro diagnosis (IVD).

**Description:** Villin can cap, nucleate, sever and bundle actin in a Ca and phosphoinositide-regulated manner. It is associated with the microvillar actin core bundle of intestinal and renal brush border implicated in adsorption. Villin is composed of six repeats, each containing 150 residues that together constitute the core domain followed by the carboxyl-terminal headpiece domain of 87 residues. The core domain retains the Ca dependent capping nucleating and severing activity, whereas the headpiece domain contributes towards actin filament bundling and binding F-actin, independently of Ca.

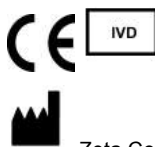
**Supplied As:** Purified antibody with 0.2% BSA and 15mM sodium azide.



*Formalin-fixed, paraffin-embedded human small intestine stained with anti-villin antibody using peroxidase-conjugate and DAB chromogen. Note brush border and cytoplasmic staining of epithelial cells*

Cat. #Z2113 (1.0 ml)

**ZETA** Corporation  
65 N 1<sup>st</sup> Ave, Ste 202C  
Arcadia, CA 91006, USA  
Tel: (626) 355-2053  
<http://www.zeta-corp.com>



Zeta Corporation



**Emergo Europe B.V.**  
Prinsessegracht 20  
2514 AP The Hague  
The Netherlands  
Tel: +31 70 345 8570