

# Tyrosinase (Clone T311)

## Mouse Monoclonal Antibody

**Specificity:** Human, Dog and Cat. Weakly cross-reacts with Mouse. Others-not known

**Immunogen:** Recombinant tyrosinase protein

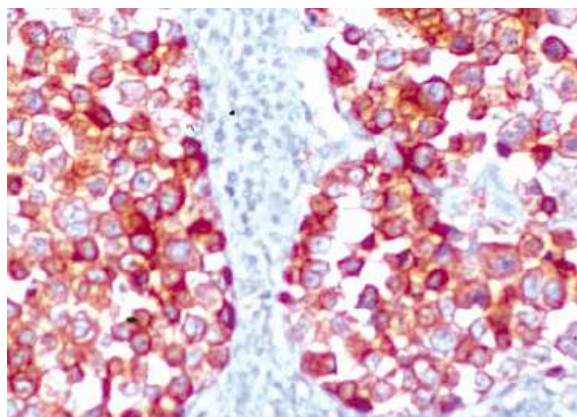
**Ig Class:** Mouse IgG2 $\alpha$

**Storage:** Store vial at 4°C. When stored at 2-8°C, this antibody is stable for 24 months

**Staining procedures:** Use formalin-fixed and paraffin-embedded sections. *Retrieval conditions:* Pretreatment of deparaffinized tissue with heat-induced epitope retrieval is recommended. *Detection methods:* Polymer anti-mouse/rabbit Ig detection system. *Working dilution:* 1:50-100. *Positive Control:* Melanoma. *Cellular Localization:* Cytoplasmic. *Intended Use:* In vitro diagnosis (IVD).

**Discription:** Tyrosinase is a copper-containing metalloglycoprotein that catalyzes several steps in the melanin pigment biosynthetic pathway; the hydroxylation of tyrosine to L-3,4-dihydroxyphenylalanine (dopa), and the subsequent oxidation of dopa to dopaquinone. Mutations of the tyrosinase gene occur in various forms of albinism. Tyrosinase is one of the targets for cytotoxic T-cell recognition in melanoma patients. Clone T311 shows no cross-reaction with MAGE-1 and tyrosinase-related protein 1, TRP-1/gp75.1 Staining of melanomas with clone T311 showed tyrosinase in melanotic as well as amelanotic variants.<sup>1</sup> Ab-1 is a useful marker for melanocytes and melanomas. Occasionally a minor band at 55kDa is also detected in Western Blotting.

**Supplied As:** Purified antibody with 0.2% BSA and 15mM sodium azide.



*Formalin-fixed, paraffin-embedded human melanoma stained with anti-tyrosinase sing peroxidase-conjugate and AEC chromogen. Note the cytoplasmic staining of melanoma cells*

**Cat. #Z2074 (1.0 ml)**