

# Tryptase (Clone G3)

## Mouse Monoclonal Antibody

**Specificity:** Human. Others-not known

**Immunogen:** Purified human tryptase protein

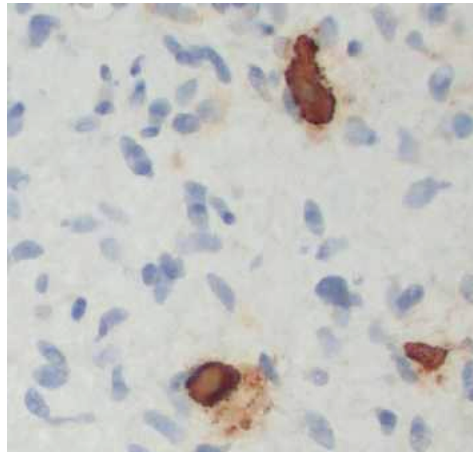
**Ig Class:** Mouse IgG1

**Storage:** Store vial at 4°C. When stored at 2-8°C, this antibody is stable for 24 months

**Staining procedures:** Use formalin-fixed and paraffin-embedded sections. *Retrieval conditions:* Pretreatment of deparaffinized tissue with heat-induced epitope retrieval is recommended. *Detection methods:* Polymer anti-mouse/rabbit Ig detection system. *Working dilution:* 1:50-200; *Positive Control:* Mast cells containing tissue or tumors. *Cellular Localization:* Cytoplasmic. *Intended Use:* In vitro diagnosis (IVD).

**Description:** Tryptases constitute a subfamily of trypsin-like proteinases, stored in the mast cell secretory granules and basophils. Upon cellular activation, these enzymes are released into the extracellular environment. Anti-tryptase is a good marker for mast cells, basophils, and their derivatives.

**Supplied As:** Purified antibody with 0.2% BSA and 15mM sodium azide.



*Formalin-fixed, paraffin-embedded human neurofibroma stained with anti-tryptase antibody using peroxidase-conjugate and DAB chromogen. Note the cytoplasmic staining of mast cells*

**Cat. #Z2125 (1.0 ml)**

**ZETA** Corporation  
65 N 1<sup>st</sup> Ave, Ste 202C  
Arcadia, CA 91006, USA  
Tel: (626) 355-2053  
<http://www.zeta-corp.com>



Zeta Corporation



**Emergo Europe B.V.**  
Prinsessegracht 20  
2514 AP The Hague  
The Netherlands  
Tel: +31 70 345 8570