

Topoisomerase II α (Clone ZM94)

Mouse Monoclonal Antibody

Specificity: Human. Others-not tested

Immunogen: Recombinant human Topoisomerase II alpha fragment (aa1352-1493)

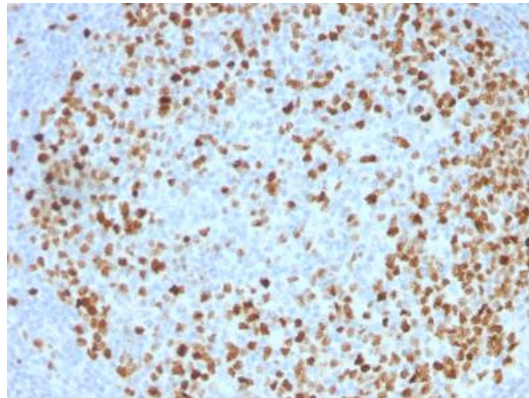
Ig Class: IgG_{2b} /k

Storage: Store vial at 4°C. When stored at 2-8°C, this antibody is stable for 24 months

Staining procedures: Use formalin-fixed and paraffin-embedded sections. *Retrieval conditions:* Pretreatment of deparaffinized tissue with heat-induced epitope retrieval is recommended. *Detection methods:* Polymer anti-mouse/rabbit Ig detection system. *Working dilution:* 1:100-200; *Positive Control:* Tonsil. *Cellular Localization:* Nuclear. *Intended Use:* In vitro diagnosis (IVD).

Description: It recognizes a 170kDa protein, which is identified as topoisomerase II α . It shows no cross-reaction with Topoisomerase II β or I. Topo II α plays important roles in synthesis and transcription of DNA as well as chromosomal segregation during mitosis. It is reported to be a sensitive and specific marker of late S-, G₂- & M-phases in transformed and developmentally regulated normal cells. Topo II α is also implicated in drug resistance of tumor cells.

Supplied As: Purified antibody with 0.2% BSA and 15mM sodium azide.



Formalin-fixed, paraffin-embedded human lymph node stained with anti-Topoisomerase II alpha antibody using peroxidase-conjugate and AEC chromogen. Note nuclear staining of germinal center B-cells

Cat. #Z2404 (1.0 ml)

ZETA Corporation
65 N 1st Ave, Ste 202C
Arcadia, CA 91006, USA
Tel: (626) 355-2053
<http://www.zeta-corp.com>



Zeta Corporation



Emergo Europe B.V.
Prinsessegracht 20
2514 AP The Hague
The Netherlands
Tel: +31 70 345 8570