

# Topoisomerase II $\alpha$ (Clone Ki-S1)

## Mouse Monoclonal Antibody

**Specificity:** Human. Others-not tested

**Immunogen:** 170kDa peptide

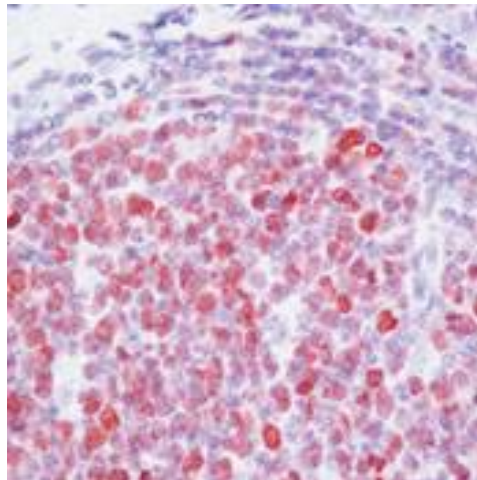
**Ig Class:** IgG<sub>2a</sub> /k

**Storage:** Store vial at 4°C. When stored at 2-8°C, this antibody is stable for 24 months

**Staining procedures:** Use formalin-fixed and paraffin-embedded sections. *Retrieval conditions:* Pretreatment of deparaffinized tissue with heat-induced epitope retrieval is recommended. *Detection methods:* Polymer anti-mouse/rabbit Ig detection system. *Working dilution:* 1:100-200; *Positive Control:* Tonsil. *Cellular Localization:* Nuclear. *Intended Use:* In vitro diagnosis (IVD).

**Description:** Topoisomerase II $\alpha$  plays important roles in synthesis and transcription of DNA as well as chromosomal segregation during mitosis. It is reported to be a sensitive and specific marker of late S-, G<sub>2</sub>- & M-phases in transformed and developmentally regulated normal cells. Topoisomerase II $\alpha$  is also implicated in drug resistance of tumor cells.

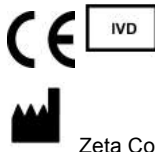
**Supplied As:** Purified antibody with 0.2% BSA and 15mM sodium azide.



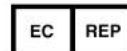
*Formalin-fixed, paraffin-embedded human lymph node stained with anti-Topoisomerase II alpha antibody using peroxidase-conjugate and AEC chromogen. Note nuclear staining of germinal center B- cells*

**Cat. #Z2175 (1.0 ml)**

**ZETA** Corporation  
65 N 1<sup>st</sup> Ave, Ste 202C  
Arcadia, CA 91006, USA  
Tel: (626) 355-2053  
<http://www.zeta-corp.com>



Zeta Corporation



**Emergo Europe B.V.**  
Prinsessegracht 20  
2514 AP The Hague  
The Netherlands  
Tel: +31 70 345 8570