

Thyroglobulin (Clone 2H11+6E1) Mouse Monoclonal Antibodies

Specificity: Human, mouse, and rat. Others not known

Immunogen: Purified human thyroglobulin.

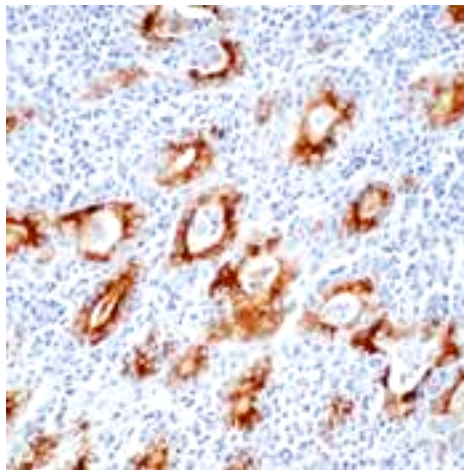
Ig Class: IgG₁ + IgG₁.

Storage: Store vial at 4°C. When stored at 2-8°C, this antibody is stable for 24 months

Staining procedures: Use formalin-fixed and paraffin-embedded sections. *Retrieval conditions:* Pretreatment of deparaffinized tissue with heat-induced epitope retrieval is recommended. *Detection methods:* Polymer anti-mouse/rabbit Ig detection system. *Working dilution:* 1:100-200; *Positive Control:* Thyroid. *Cellular Localization:* Cytoplasmic. *Intended Use:* In vitro diagnosis (IVD).

Description: Antibody to thyroglobulin has been shown to be useful in positive identification of thyroid carcinomas of the papillary and follicular types. Demonstration of thyroglobulin in a metastatic lesion establishes the thyroid origin of the tumor. Adenocarcinomas of non-thyroidal origin are not reactive. Clone 2H11+6E1 cocktail is especially designed for sensitive detection of thyroglobulin. It stains thyroglobulin in follicular epithelial cells as well as colloid tissue.

Supplied As: Tissue culture supernatant with 0.2% BSA and 15mM sodium azide.



Formalin-fixed, paraffin-embedded human thyroid gland from Hashimoto's thyroiditis stained with anti-thyroglobulin antibody using peroxidase-conjugate and DAB chromogen. Note the cytoplasmic of follicular cells

Cat. #Z2062 (1.0 ml)

ZETA Corporation
65 N 1st Ave, Ste 202C
Arcadia, CA 91006, USA
Tel: (626) 355-2053
<http://www.zeta-corp.com>



Zeta Corporation



Emergo Europe B.V.
Prinsessegracht 20
2514 AP The Hague
The Netherlands
Tel: +31 70 345 8570