

Thrombomodulin / CD141 (Clone ZM105)

Mouse Monoclonal Antibody

Specificity: Human. Others-not known

Immunogen: Recombinant human thrombomodulin protein fragment (aa69-194)

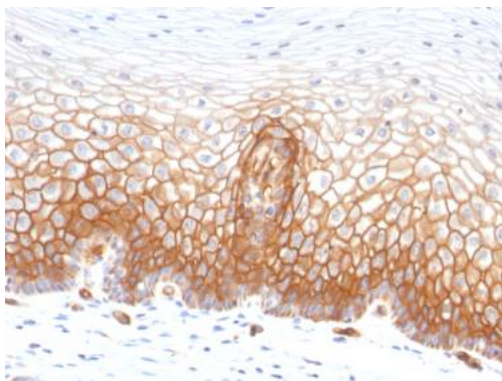
Ig Class: IgG2b/ κ

Storage: Store vial at 4°C. When stored at 2-8°C, this antibody is stable for 24 months

Staining procedures: Use formalin-fixed and paraffin-embedded sections. *Retrieval conditions:* Pretreatment of deparaffinized tissue with heat-induced epitope retrieval is recommended. *Detection methods:* Polymer anti-mouse/rabbit Ig detection system. *Working dilution:* 1:100-200; *Positive Control:* Mesothelioma. *Cellular Localization:* Cytoplasmic. *Intended Use:* In vitro diagnosis (IVD).

Description: It recognizes a protein of 75kDa, identified as Thrombomodulin. Thrombomodulin is a transmembrane glycoprotein with natural anticoagulant properties. It is normally expressed by a restricted number of cells, such as endothelial and mesothelial cells. In addition, synovial lining and syncytio-trophoblasts of placenta also express thrombomodulin. This protein is present in almost all of benign vascular tumors and majority of malignant vascular tumors (Kaposi's sarcoma, angiosarcoma, and epithelioid hemangioendothelioma). Hence, anti-thrombomodulin serves as a sensitive marker for lymphatic endothelial cells and their tumors. Recently, thrombomodulin antibody has been used for mesothelial cells and malignant mesotheliomas.

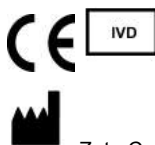
Supplied As: Purified antibody with 0.2% BSA and 15mM sodium azide.



Formalin-fixed, paraffin-embedded human cervix stained with anti-tryptase antibody using peroxidase-conjugate and DAB chromogen. Note the cytoplasmic staining of squamous epithelial cells

Cat. #Z2416 (1.0 ml)

ZETA Corporation
65 N 1st Ave, Ste 202C
Arcadia, CA 91006, USA
Tel: (626) 355-2053
<http://www.zeta-corp.com>



Zeta Corporation



Emergo Europe B.V.
Prinsessegracht 20
2514 AP The Hague
The Netherlands
Tel: +31 70 345 8570