

TTF-1 (Clone 8G7G3/1) Mouse Monoclonal Antibody

Specificity: Human, Mouse, and Rat. Shows a broad species reactivity

Immunogen: Rat TTF-1 recombinant protein

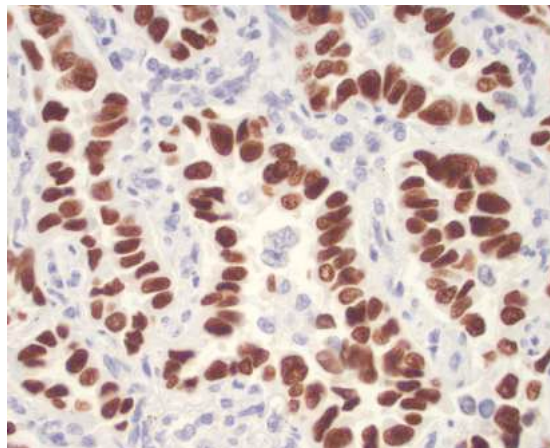
Ig Class: IgG1/ κ

Storage: Store vial at 4°C. When stored at 2-8°C, this antibody is stable for 24 months

Staining procedures: Use formalin-fixed and paraffin-embedded sections. *Retrieval conditions:* Pretreatment of deparaffinized tissue with heat-induced epitope retrieval is recommended. *Detection methods:* Polymer anti-mouse/rabbit Ig detection system. *Working dilution:* 1:200; *Positive Control:* Normal thyroid or lung. *Cellular Localization:* Nuclear. *Intended Use:* In vitro diagnosis (IVD).

Description: TTF-1 (Thyroid transcription factor-1) is a member of the NKx2 family of homeodomain transcription factors. It is expressed in epithelial cells of the thyroid gland and the lung. Nuclei from liver, stomach, pancreas, small intestine, colon, kidney, breast, skin, testes, pituitary, prostate, and adrenal glands are unreactive. TTF-1 is detected in primary lung adenocarcinomas and small cell carcinomas and is absent in colon and breast carcinomas. Staining with TTF-1 antibody is useful for distinguishing between tumors of lung and non-lung origin.

Supplied As: Purified from ascites fluid by Protein G chromatography in 15mM sodium azide.



Formalin-fixed, paraffin-embedded human lung carcinoma stained with anti-TTF-1 antibody using peroxidase-conjugate and DAB chromogen. Note the nuclear staining of carcinoma cells

Cat. #Z2069 (1.0 ml)

ZETA Corporation
65 N 1st Ave, Ste 202C
Arcadia, CA 91006, USA
Tel: (626) 355-2053
<http://www.zeta-corp.com>



Zeta Corporation



Emergo Europe B.V.
Prinsessegracht 20
2514 AP The Hague
The Netherlands
Tel: +31 70 345 8570