
TLE1 (Clone ZM93)

Mouse Monoclonal Antibody

Specificity: Human, mouse. Others not known

Immunogen: Recombinant human TLE1 fragment (aa 175-338)

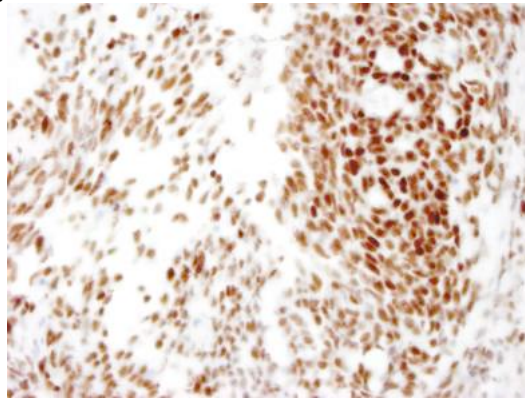
Ig Class: IgG2a/k

Storage: Store vial at 4°C. When stored at 2-8°C, this antibody is stable for 24 months

Staining procedures: Use formalin-fixed and paraffin-embedded sections. *Retrieval conditions:* Pretreatment of deparaffinized tissue with heat-induced epitope retrieval is recommended. *Detection methods:* Polymer anti-mouse/rabbit Ig detection system. *Working dilution:* 1:100-200; *Positive Control:* synovial sarcoma. *Cellular Localization:* cytoplasmic. *Intended Use:* In vitro diagnosis (IVD).

Description: Key players in the Notch pathway are the TLE genes, which are human homologs of the *Drosophila* groucho gene. Groucho is a transcriptional repressor that plays a key role in neurogenesis, segmentation and sex determination. Transducin-like enhancer protein 1 (TLE1) is a protein that is encoded by the TLE1 gene and is involved in control of hematopoiesis, neuronal, and terminal epithelial differentiation. Positive immunohistochemical nuclear staining with anti-TLE-1 has been shown to be a useful addition to an IHC panel when differentiating synovial sarcoma from other soft tissue malignancies.

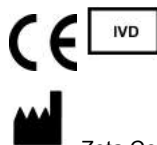
Supplied As: Purified antibody in 0.2% BSA and 15mM sodium azide.



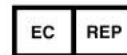
Formalin-fixed, paraffin-embedded human synovial sarcoma stained with anti-TLE1 antibody using peroxidase-conjugate and DAB chromogen. Note nuclear staining of tumor cells

Cat. #Z2403 (1.0 ml)

ZETA Corporation
65 N 1st Ave, Ste 202C
Arcadia, CA 91006, USA
Tel: (626) 355-2053
<http://www.zeta-corp.com>



Zeta Corporation



Emergo Europe B.V.
Prinsessegracht 20
2514 AP The Hague
The Netherlands
Tel: +31 70 345 8570