

---

## T-Cell Antigen Receptor $\beta$ -F1 (Clone 8A3) Mouse Monoclonal Antibody

**Specificity:** Human. Others not known

**Immunogen:** Human TCR  $\beta$  chain constant region

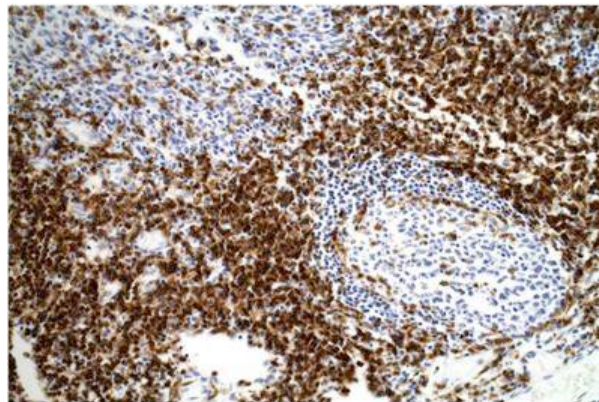
**Ig Class:** IgG1

**Storage:** Store vial at 4°C. When stored at 2-8°C, this antibody is stable for 24 months

**Staining procedures:** Use formalin-fixed and paraffin-embedded sections. *Retrieval conditions:* Pretreatment of deparaffinized tissue with heat-induced epitope retrieval is recommended. *Detection methods:* Polymer anti-mouse/rabbit Ig detection system. *Working dilution:* 1:50-100; *Positive Control:* Tonsile. *Cellular Localization:* cytoplasmic. *Intended Use:* In vitro diagnosis (IVD).

**Description:** TCR $\beta$  is used as a phenotypic marker for TCR $\beta$  expressing T-cells. T-cell receptor (TCR) is a heterodimer consisting of an  $\alpha$  and a  $\beta$  chain (TCR  $\alpha/\beta$ ) or a  $\gamma$  and a  $\delta$  chain (TCR  $\gamma/\delta$ ). TCR- $\beta$  is a member of the immunoglobulin super family and a component of the CD3/TCR complex (along with TCR- $\alpha$ ). TCR $\beta$  is expressed by thymocytes and a majority of peripheral ( $\alpha/\beta$  TCR-bearing) T-cells. This antibody does not cross-react with  $\gamma/\delta$  TCR-bearing T-cells.

**Supplied As:** Purified antibody in 0.2% BSA and 15mM sodium azide.



*Formalin-fixed, paraffin-embedded human tonsil stained with anti- $\beta$ -F1 antibody using peroxidase-conjugate and DAB chromogen. Note cytoplasmic staining perifollicular T-cells*

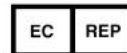
**Cat. #Z2230 (1.0 ml)**

---

**ZETA** Corporation  
65 N 1<sup>st</sup> Ave, Ste 202C  
Arcadia, CA 91006, USA  
Tel: (626) 355-2053  
<http://www.zeta-corp.com>



Zeta Corporation



**Emergo Europe B.V.**  
Prinsessegracht 20  
2514 AP The Hague  
The Netherlands  
Tel: +31 70 345 8570