
TCL1 (Clone EP105) Rabbit Monoclonal Antibody

Specificity: Human. Others-not tested

Immunogen: A synthetic peptide corresponding to residues in human TCL1 protein

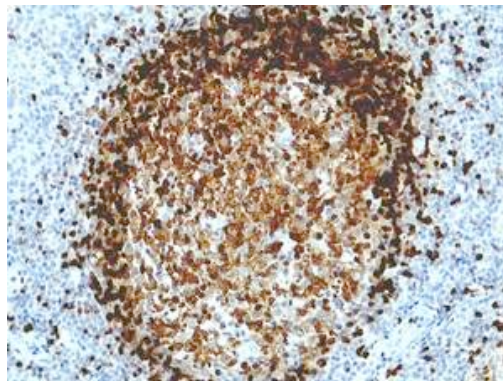
Ig Class: Rabbit IgG

Storage: Store vial at 4°C. When stored at 2-8°C, this antibody is stable for 24 months

Staining procedures: Use formalin-fixed and paraffin-embedded sections. *Retrieval conditions:* Pretreatment of deparaffinized tissue with heat-induced epitope retrieval is recommended. *Detection methods:* Polymer anti-mouse/rabbit Ig detection system. *Working dilution:* 1:50-100. *Positive Control:* Tonsil. *Cellular Localization:* Cytoplasmic. *Intended Use:* In vitro diagnosis (IVD).

Description: T-cell leukemia/lymphoma protein 1A (TCL1) is a member of the TCL1 family and enhances the phosphorylation and activation of AKT1, AKT2 and AKT3. TCL1 promotes the nuclear translocation of AKT1 and enhances cell proliferation, stabilizes mitochondrial membrane potential and promotes cell survival. The expression of TCL1 is restricted to lymphoid cells. It is expressed early in lymphocyte differentiation. Strong expression of TCL1 is found in a subset of mantle zone B lymphocytes and is expressed to a lesser extent by follicle center cells. In B cell neoplasia, TCL1 immunoreactivity is found in the majority of B cell lymphomas including lymphoblastic lymphoma, chronic lymphocytic leukemia, mantle cell lymphoma, follicular lymphoma, Burkitt lymphoma, diffuse large B-cell lymphoma (60%), and primary cutaneous B cell lymphoma (55%). The expression of the TCL1 gene characterizes low-grade B cell lymphomas.

Supplied As: Purified antibody fraction from rabbit anti-serum with 0.2% BSA and 15mM sodium azide.



Formalin-fixed, paraffin-embedded human tonsil stained with anti-TCL1 using peroxidase-conjugate and DAB chromogen. Note strong staining of a lymphoid follicle

Cat. #Z2266 (1.0 ml)

ZETA Corporation
65 N 1st Ave, Ste 202C
Arcadia, CA 91006, USA
Tel: (626) 355-2053
<http://www.zeta-corp.com>



Zeta Corporation



Emergo Europe B.V.
Prinsessegracht 20
2514 AP The Hague
The Netherlands
Tel: +31 70 345 8570