

Synaptophysin (Clone SP11)

Rabbit Monoclonal Antibody

Specificity: Human. Others not tested

Immunogen: A synthetic peptide of human synaptophysin

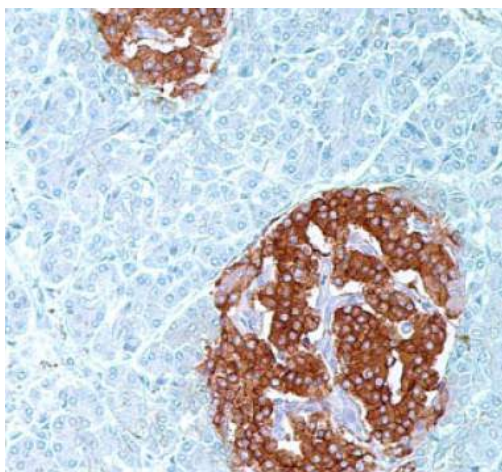
Ig Class: Rabbit IgG

Storage: Store vial at 4°C. When stored at 2-8°C, this antibody is stable for 24 months

Staining procedures: Use formalin-fixed and paraffin-embedded sections. *Retrieval conditions:* Pretreatment of deparaffinized tissue with heat-induced epitope retrieval is recommended. *Detection methods:* Polymer anti-mouse/rabbit Ig detection system. *Working dilution:* 1:100; *Positive Control:* Pancreas. *Cellular Localization:* Cytoplasmic. *Intended Use:* In vitro diagnosis (IVD).

Description: This antibody recognizes a protein of 38kDa, identified as synaptophysin. It labels normal neuroendocrine cells of human adrenal medulla, carotid body, skin, pituitary gland, thyroid, lung, pancreas, gastrointestinal mucosa, Paneth's cells the gastrointestinal tract and of gastric parietal cells. Neurons in the brain, spinal cord, and retina are labeled. In combination with anti-chromogranin and anti-NSE, Ab to synaptophysin is very useful the identification of normal neuroendocrine cells neuroendocrine neoplasms.

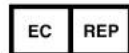
Supplied As: Tissue culture supernatant with 0.2% BSA and 15mM sodium azide.



Formalin-fixed, paraffin-embedded human pancreatic tissue stained with anti-synaptophysin antibody using peroxidase-conjugate and DAB chromogen. Note the cytoplasmic staining of islet cells

Cat. #Z2039 (1.0 ml)

ZETA Corporation
65 N 1st Ave, Ste 202C
Arcadia, CA 91006, USA
Tel: (626) 355-2053
<http://www.zeta-corp.com>



Zeta Corporation

Emergo Europe B.V.
Prinsessegracht 20
2514 AP The Hague
The Netherlands
Tel: +31 70 345 8570