

# Synaptophysin (Clone EP158)

## Rabbit Monoclonal Antibody

**Specificity:** Human. Others not tested

**Immunogen:** Synthetic peptide within Human Synaptophysin aa 200-300

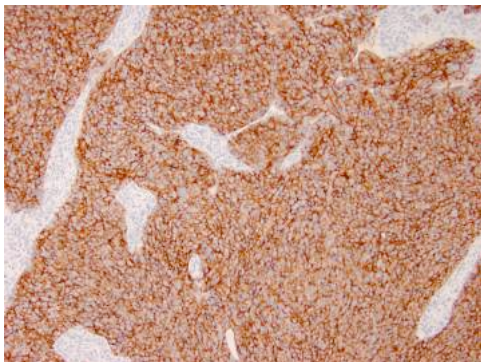
**Ig Class:** Rabbit IgG

**Storage:** Store vial at 4°C. When stored at 2-8°C, this antibody is stable for 24 months

**Staining procedures:** Use formalin-fixed and paraffin-embedded sections. *Retrieval conditions:* Pretreatment of deparaffinized tissue with heat-induced epitope retrieval is recommended. *Detection methods:* Polymer anti-mouse/rabbit Ig detection system. *Working dilution:* 1:100; *Positive Control:* Pancreas. *Cellular Localization:* Cytoplasmic. *Intended Use:* In vitro diagnosis (IVD).

**Description:** This antibody recognizes a protein of 38kDa, identified as synaptophysin. It labels normal neuroendocrine cells of human adrenal medulla, carotid body, skin, pituitary gland, thyroid, lung, pancreas, gastrointestinal mucosa, Paneth's cells the gastrointestinal tract and of gastric parietal cells. Neurons in the brain, spinal cord, and retina are labeled. In combination with anti-chromogranin and anti-NSE, Ab to synaptophysin is very useful the identification of normal neuroendocrine cells neuroendocrine neoplasms.

**Supplied As:** Purified antibody with 0.2% BSA and 15mM sodium azide.

**References:**

1. Wiedenmann B, et al. Cell. 1985; 41:1017-28.
2. Lyda MH, et al. Hum Pathol. 2000; 31:980-7.
3. Skacel M, et al. Appl Immunohistochem Mol Morphol. 2000; 8:302-9.

*Formalin-fixed, paraffin-embedded human neuroendocrine tumor stained with anti-synaptophysin antibody using peroxidase-conjugate and DAB chromogen. Note the cytoplasmic staining of islet cells*

Cat. #Z2529 (1.0 ml)

**ZETA** Corporation  
65 N 1<sup>st</sup> Ave, Ste 202C  
Arcadia, CA 91006, USA  
Tel: (626) 355-2053  
<http://www.zeta-corp.com>



Zeta Corporation



**Emergo Europe B.V.**  
Prinsessegracht 20  
2514 AP The Hague  
The Netherlands  
Tel: +31 70 345 8570