

Survivin (Clone EP119) Rabbit Monoclonal Antibody

Specificity: Human and Mouse. Others not tested

Immunogen: Synthetic peptide within Human Survivin aa 1-100 (N terminal)

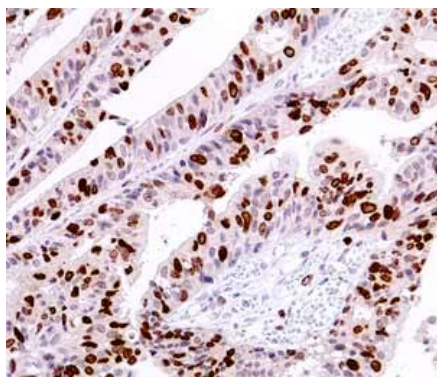
Ig Class: Rabbit IgG

Storage: Store vial at 4°C. When stored at 2-8°C, this antibody is stable for 24 months

Staining procedures: Use formalin-fixed and paraffin-embedded sections. *Retrieval conditions:* Pretreatment of deparaffinized tissue with heat-induced epitope retrieval is recommended. *Detection methods:* Polymer anti-mouse/rabbit Ig detection system. *Working dilution:* 1:50; *Positive Control:* Normal pancreas (alpha cells) or prostate carcinoma. *Cellular Localization:* Cytoplasmic. *Intended Use:* In vitro diagnosis (IVD).

Description: Survivin is a new inhibitor of apoptosis (IAP) protein. It is expressed in the G2/M phase of the cell cycle in a cycle-regulated manner. The overexpression of surviving in cancer may overcome this apoptotic checkpoint and favor aberrant progression of transformed cells through mitosis.

Supplied As: Purified antibody with 0.2% BSA and 15mM sodium azide.



References:

1. Wang Q et al. *Med Sci Monit* .2018;24:1955-1961
2. Sun M et al. *Cancer Cell Int*. 2018;18:58.

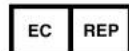
Formalin-fixed, paraffin-embedded human gastric carcinoma stained with anti-survivin antibody using peroxidase-conjugate and AEC chromogen. Note cytoplasmic staining of islet cells

Cat #: Z2530 (1.0 ml)

ZETA Corporation
65 N 1st Ave, Ste 202C
Arcadia, CA 91006, USA
Tel: (626) 355-2053
<http://www.zeta-corp.com>



Zeta Corporation



Emergo Europe B.V.
Prinsessegracht 20
2514 AP The Hague
The Netherlands
Tel: +31 70 345 8570