

Somatostatin Receptor Type 2 (Clone EP149) Rabbit Monoclonal Antibody

Specificity: Human. Others not tested

Immunogen: Human amyloid A

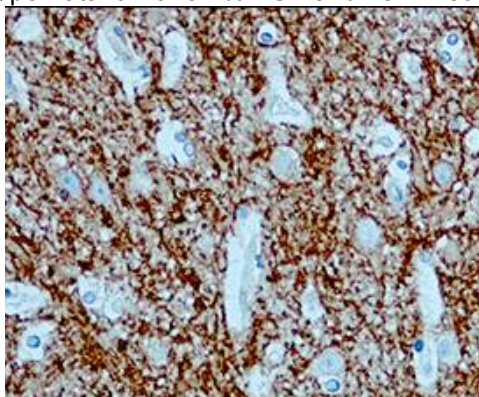
Ig Class: Rabbit IgG

Storage: Store vial at 4°C. When stored at 2-8°C, this antibody is stable for 24 months

Staining procedures: Use formalin-fixed and paraffin-embedded sections. *Retrieval conditions:* Pretreatment of deparaffinized tissue with heat-induced epitope retrieval is recommended. *Detection methods:* Polymer anti-mouse/rabbit Ig detection system. *Working dilution:* 1:50-100. *Positive Control:* Neuroendocrine tumor. *Cellular Localization:* Cytoplasmic or extracellular. *Intended Use:* In vitro Diagnosis (IVD).

Description: Somatostatin Receptor Type 2 (SSTR2) is one of five 7-transmembrane G-protein-coupled receptors for somatostatins 14 and 28. An antibody to SSTR2 labels neural and endocrine cells in normal tissues. SSTR2 is detected in tumors of neural and endocrine origin, including meningiomas, neuroblastomas, pituitary adenomas, small cell lung carcinomas and carcinoid tumors. The expression of SSTR2 in breast carcinoma and lymphoma may also be observed. The SSTR2-positive tumors can be effectively treated with somatostatin receptor type 2 analogs, such as Octreotide (Sandostatin), Lanreotide (Somatuline), or Pasireotide (Signifor).

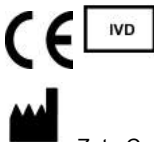
Supplied As: Tissue culture supernatant with 0.2% BSA and 15mM sodium azide.



Formalin-fixed, paraffin-embedded human neuroendocrine tumor stained with anti-somatostatin antibody using peroxidase-conjugate and AEC chromogen. Note cytoplasmic staining of tumor cells

Cat. #Z2291 (1.0 ml)

ZETA Corporation
65 N 1st Ave, Ste 202C
Arcadia, CA 91006, USA
Tel: (626) 355-2053
<http://www.zeta-corp.com>



Zeta Corporation



Emergo Europe B.V.
Prinsessegracht 20
2514 AP The Hague
The Netherlands
Tel: +31 70 345 8570