

Smooth Muscle Actin (SMA) (Clone 1A4)

Mouse Monoclonal Antibody

Specificity: Human, Baboon, Cow, Rabbit, Mouse, Rat, Chicken; Others-not known

Immunogen: N-Terminal decapeptide of alpha smooth muscle isoform of actin; acetylated at the N-terminus

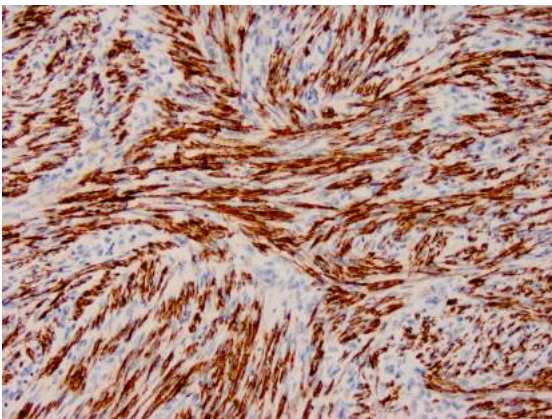
Ig Class: IgG2_κ

Storage: Store vial at 4°C. When stored at 2-8°C, this antibody is stable for 24 months.

Staining procedures: Use formalin-fixed and paraffin-embedded sections. *Retrieval conditions:* Pretreatment of deparaffinized tissue with heat-induced epitope retrieval is recommended. *Detection methods:* Polymer anti-mouse/rabbit Ig detection system. *Working dilution:* 1:100; *Positive Control:* Smooth muscle or leiomyosarcoma. *Cellular Localization:* Cytoplasmic. *Intended Use:* In vitro diagnosis (IVD).

Description: 1A4 stains smooth muscle cells in vessel walls, gut wall, and myometrium. Myoepithelial cells in breast and salivary gland are also stained. This antibody reacts with tumors arising from smooth muscles and myoepithelial cells. Use Actin and/or Tubulin for monitoring total protein load on Western blots.

Supplied As: Purified antibody with 0.2% BSA and 15mM sodium azide.



References:

1. Cooke PH. *J Cell Biol.* 1976; 68:539-56.
2. Skalli O, et al. *J Cell Biol.* 1986; 103:2787-96.
3. Perez-Montiel MD, et al. *Am J Dermatopathol.* 2006; 28:105-11.

Formalin-fixed, paraffin-embedded human uterus stained with anti-SMA antibody using peroxidase-conjugate and DAB chromogen. Note the cytoplasmic staining of smooth muscle cells

Cat. #Z2066 (1.0 ml)

ZETA Corporation
65 N 1st Ave, Ste 202C
Arcadia, CA 91006, USA
Tel: (626) 355-2053
<http://www.zeta-corp.com>



Zeta Corporation



Emergo Europe B.V.
Prinsessegracht 20
2514 AP The Hague
The Netherlands
Tel: +31 70 345 8570