

---

# SATB2 (Clone EP281)

## Rabbit Monoclonal Antibody

**Specificity:** Mouse, rat, human

**Immunogen:** Synthetic peptide corresponding to human SATB2.

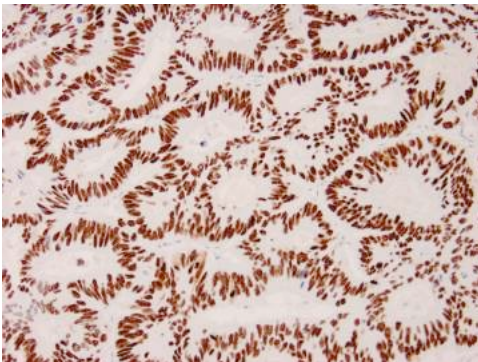
**Ig Class:** Rabbit IgG

**Storage:** Store vial at 4° C. When stored at 2-8° C, this antibody is stable for 24 months

**Staining procedures:** Use formalin-fixed and paraffin-embedded sections. *Retrieval conditions:* Pretreatment of deparaffinized tissue with heat-induced epitope retrieval is recommended. *Detection methods:* Polymer anti-mouse/rabbit Ig detection system. *Working dilution:* 1:50-100; *Positive Control:* Colon or colon cancer. *Cellular Localization:* Nuclear. *Intended Use:* In vitro diagnosis (IVD).

**Description:** DNA-binding protein SATB2, also known as Special AT-rich sequence-binding protein 2, is a nuclear matrix-associated transcription factor. SATB2 acts as a docking site for chromatin remodeling enzymes and recruits co-activators and co-repressors to control nuclear gene expression. SATB2 also regulates skeletal development, osteoblast differentiation, and modulates immunoglobulin expression. In normal tissues, strong nuclear SATB2 expression is observed in essentially all glandular cells lining the lower gastrointestinal tract, including the appendix, colon, and rectum. SATB2 is also expressed in neuroendocrine cells. In tumor tissues, SATB2 is detected in cancer cells (including neuroendocrine tumor) of colorectal origin. SATB2 shows high sensitivity (85%) for CRC, which is further enhanced to 93% when stained in conjunction with CK20.

**Supplied As:** Purified antibody with 0.2% BSA and 15mM sodium azide.



### References:

1. Mangnusso K, et al. *Am J Surg Pathol.* 2011; 35:937-48.
2. Lin F, et al. *Arch Pathol Lab Med.* 2014; 138:1015-26.
3. Dragomir A, et al. *Am J Clin Pathol.* 2014; 141:630-38.

*Formalin-fixed, paraffin-embedded human colon adenocarcinoma stained with anti-SATB2 antibody using peroxidase-conjugate and DAB chromogen. Note nuclear staining of carcinoma glands*

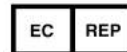
Cat. #Z2321 (1.0 ml)

---

**ZETA** Corporation  
65 N 1<sup>st</sup> Ave, Ste 202C  
Arcadia, CA 91006, USA  
Tel: (626) 355-2053  
<http://www.zeta-corp.com>



Zeta Corporation



**Emergo Europe B.V.**  
Prinsessegracht 20  
2514 AP The Hague  
The Netherlands  
Tel: +31 70 345 8570