

---

## SALL4 (Clone EP299) Rabbit Monoclonal Antibody

**Specificity:** Human, mouse

**Immunogen:** Recombinant fragment corresponding to amino acids 954-1054 of Human Sall4

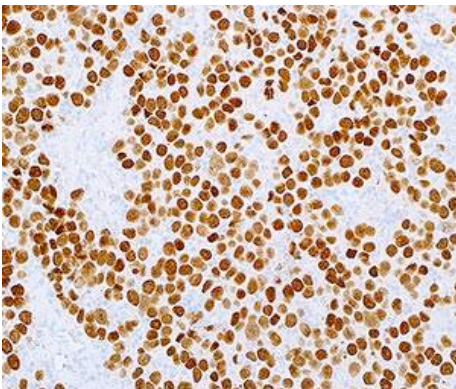
**Ig Class:** IgG

**Storage:** Store vial at 4°C. When stored at 2-8°C, this antibody is stable for 24 months

**Staining procedures:** Use formalin-fixed and paraffin-embedded sections. *Retrieval conditions:* Pretreatment of deparaffinized tissue with heat-induced epitope retrieval is recommended. *Detection methods:* Polymer anti-mouse/rabbit Ig detection system. *Working dilution:* 1:50-100; *Positive Control:* seminoma. *Cellular Localization:* Nuclear. *Intended Use:* In vitro diagnosis (IVD).

**Description:** SALL4 is a zinc finger transcription factor. Anti-SALL4 demonstrates 100% sensitivity and stains more than 90% tumor cells in all intratubular germ cell neoplasia, seminomas/ dysgerminomas, embryonal carcinomas, and yolk sac tumor (YST). Anti-SALL4 also stains most cases of teratoma and the mononucleated trophoblastic cells in choriocarcinomas. In contrast, non-germ cell tumors show no anti-SALL4 staining. Most non-testicular tumors from various organs and sites are negative for anti-SALL4, though an occasional carcinoma or sarcoma may show weak anti-SALL4 staining in less than 25% of tumor cells except hepatocellular carcinoma (HCC). In HCC, anti-SALL4 staining shows a intranuclear granular pattern.

**Supplied As:** Purified antibody in 0.2% BSA and 15mM sodium azide.



### References:

1. Miettinen M, et al. *Am J Surg Pathol.* 2014; 38:410-20.
2. Yang J, et al. *PNAS.* 2008; 105:19756-61.

*Formalin-fixed, paraffin-embedded human seminoma stained with anti-SALL4 antibody using peroxidase-conjugate and DAB chromogen. Note nuclear staining of tumor cells*

**Cat. #Z2332 (1.0 ml)**

---

**ZETA Corporation**  
65 N 1<sup>st</sup> Ave, Ste 202C  
Arcadia, CA 91006, USA  
Tel: (626) 355-2053  
<http://www.zeta-corp.com>



Zeta Corporation

**Emergo Europe B.V.**  
Prinsessegracht 20  
2514 AP The Hague  
The Netherlands  
Tel: +31 70 345 8570