

## S100P (Clone EP234) Rabbit Monoclonal Antibody

**Specificity:** Human. Others not tested

**Immunogen:** A synthetic peptide corresponding to residues of human S100P protein

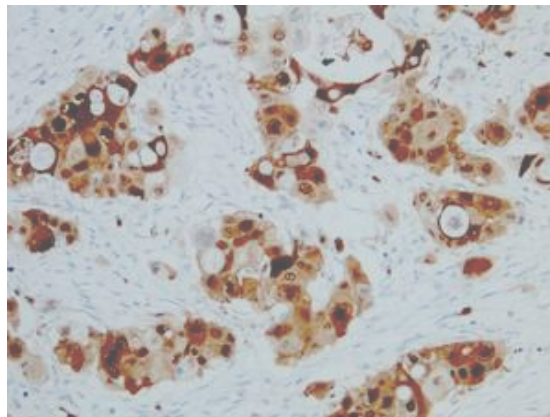
**Ig Class:** Rabbit IgG

**storage:** Store vial at 4°C. When stored at 2-8°C, this antibody is stable for 24 months

**Staining procedures:** Use formalin-fixed and paraffin-embedded sections. *Retrieval conditions:* Pretreatment of deparaffinized tissue with heat-induced epitope retrieval is recommended. *Detection methods:* Polymer anti-mouse/rabbit Ig detection system. *Working dilution:* 1:50-100. *Positive Control:* Colon cancer. *Cellular Localization:* Membrane. *Intended Use:* In vitro diagnosis (IVD).

**Description:** S100P is a member of the S100 family of proteins containing 2 EF-hand calcium-binding motifs. S100 proteins are localized in the cytoplasm and/or nuclei of a wide range of cells, and they are involved in the regulation of a number of cellular processes such as cell cycle progression and differentiation. S100P is expressed in various normal tissues including placenta, bladder, spleen and gastric and intestinal mucosa. Overexpression of S100P has been detected in several cancers such as colon, prostate, pancreatic and lung carcinomas. It has been functionally implicated in carcinogenic processes. S100P is an early developmental marker of pancreatic carcinogenesis and can be used as a marker for pancreatic ductal adenocarcinoma. It may also serve as a predictor of distant metastasis and poor survival in non-small cell lung carcinomas.

**Supplied As:** Tissue culture supernatant with 0.2% BSA and 15mM sodium azide.



*Formalin-fixed, paraffin-embedded human pancreatic ductal carcinoma stained with anti-S100P antibody using peroxidase-conjugate and DAB chromogen. Note cytoplasmic staining of tumor cells*

**Cat. #Z2277 (1.0 ml)**

**ZETA** Corporation  
65 N 1<sup>st</sup> Ave, Ste 202C  
Arcadia, CA 91006, USA  
Tel: (626) 355-2053  
<http://www.zeta-corp.com>



Zeta Corporation

**Emergo Europe B.V.**  
Prinsessegracht 20  
2514 AP The Hague  
The Netherlands  
Tel: +31 70 345 8570