

# S100 Protein (Clone 4C4.9)

## Mouse Monoclonal Antibody

**Specificity:** Human, cow, rat, and mouse. Others-not known

**Immunogen:** Purified bovine brain S100 protein

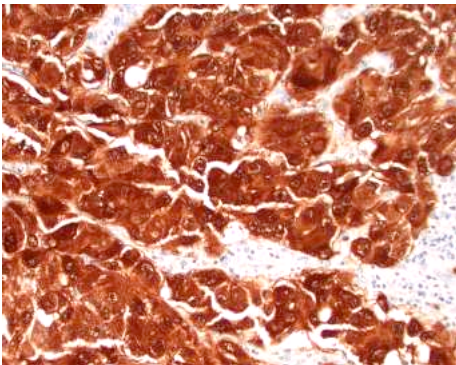
**Ig Class:** IgG<sub>2a</sub>

**Storage:** Store vial at 4°C. When stored at 2-8°C, this antibody is stable for 24 months

**Staining procedures:** Use formalin-fixed and paraffin-embedded sections. *Retrieval conditions:* Pretreatment of deparaffinized tissue with heat-induced epitope retrieval is recommended. *Detection methods:* Polymer anti-mouse/rabbit Ig detection system. *Working dilution:* 150-300; *Positive control:* Melanoma. *Cellular Localization:* Cytoplasmic and nuclear. *Intended Use:* In vitro diagnosis (IVD).

**Description:** S100 belongs to the family of calcium binding proteins such as calmodulin and troponin C. S100A is composed of an alpha and beta chain whereas S100B is composed of two beta chains. S100 protein is also expressed in the antigen presenting cells such as the Langerhans cells in skin and interdigitating reticulum cells in the paracortex of lymph nodes. Antibody to S100 stains Schwannomas, ependymomas, astroglomas, almost all benign and malignant melanomas and their metastases. Ab-1 is excellent for immunohistochemical staining of formalin-fixed, paraffinembedded tissues. S100 protein is highly soluble and may be eluted from frozen tissue during staining tissues.

**Supplied As:** Purified antibody with 0.2% BSA and 15mM sodium azide.



### References:

1. Kuhn HJ, et al. *Am J Clin Pathol.* 1983; 79:341-347.
2. Yaziji H, et al. *Int J Surg Pathol.* 2003; 11:11-5.
3. McLaren KM, et al. *Hum Pathol.* 1996; 27:633-6.

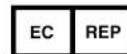
*Formalin-fixed, paraffin-embedded human melanoma stained with anti-S-100 antibody using peroxidase conjugate and DAB chromogen. Note intense nuclear and cytoplasmic staining of melanoma cells*

Cat. #Z2055 (1.0 ml)

**ZETA** Corporation  
65 N 1<sup>st</sup> Ave, Ste 202C  
Arcadia, CA 91006, USA  
Tel: (626) 355-2053  
<http://www.zeta-corp.com>



Zeta Corporation



**Emergo Europe B.V.**  
Prinsessegracht 20  
2514 AP The Hague  
The Netherlands  
Tel: +31 70 345 8570