

## Renal Cell Carcinoma Marker (Clone 66.4.C2) Mouse Monoclonal Antibody

**Specificity:** Human and Rat. Others-not known

**Immunogen:** Native from human renal cortical tissue homogenate

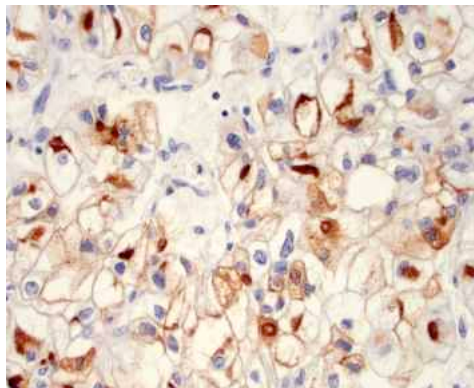
**Ig Class:** IgG<sub>2α</sub>

**Storage:** Store vial at 4°C. When stored at 2-8°C, this antibody is stable for 24 months.

**Staining procedures:** Use formalin-fixed and paraffin-embedded sections. *Retrieval conditions:* Pretreatment of tissue with proteolytic enzymes should be performed prior to staining. *Detection methods:* Polymer anti-mouse/rabbit Ig detection system. *Working dilution:* 1:100-200; *Positive Control:* Normal kidney or renal cell carcinoma. *Cellular Localization:* Membranous/ Cytoplasmic. *Intended Use:* In vitro diagnosis (IVD).

**Description:** In normal kidney, gp200 is localized along the brush border of the pars convoluta and pars recta segments of the proximal tubule, as well as focally along the luminal surface of Bowman's capsule adjoining the outgoing proximal tubule. Of other normal tissues examined, the gp200 is also localized along the luminal surfaces of breast lobules and ducts, the luminal surface of the epididymal tubular epithelium, within the cytoplasm of parathyroid parenchymal cells, and focally within the colloid of thyroid follicles<sup>1</sup>. Thirty-one other normal tissues do not express similar or cross-reacting antigens<sup>1</sup>. Reportedly, gp200 is expressed by 93% of primary and 84% of metastatic renal cell carcinomas. 66.4.C2 shows no significant cross reactivity with other carbohydrate determinants, such as the Lewis blood group antigens, epithelial membrane antigen, HMFG, and AB blood group antigens<sup>1</sup>. Ab-1 may be a useful reagent in the investigations of carcinomas of proximal nephrogenic differentiation especially those showing tubular differentiation.

**Supplied As:** Tissue culture supernatant with 0.2% BSA and 15mM sodium azide.



*Formalin-fixed and paraffin-embedded human clear cell renal cell carcinoma stained with anti-RCC antibody using peroxidase-conjugate and DAB chromogen. Note the cytoplasmic and Golgi staining of tumor cells*

Cat. #Z2256 (1.0 ml)