

Prostein (p501S) (Clone ZR9) Rabbit Monoclonal Antibody

Specificity: Human. Others not tested

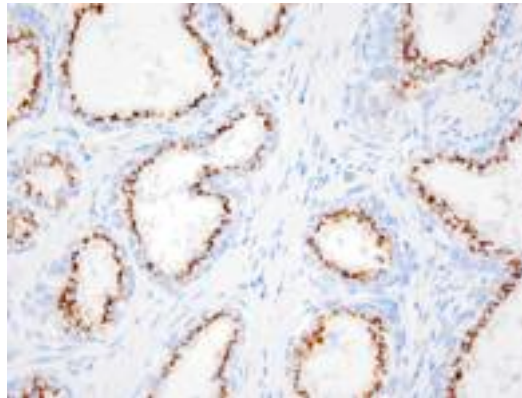
Immunogen: Synthesized peptides to the N-terminus of human prostein

Ig Class: IgG

Storage: Store vial at 4°C. When stored at 2-8°C, this antibody is stable for 24 months

Staining procedures: Use formalin-fixed and paraffin-embedded sections. *Retrieval conditions:* Pretreatment of deparaffinized tissue with heat-induced epitope retrieval is recommended. *Detection methods:* Polymer anti-mouse/rabbit Ig detection system. *Working dilution:* 1:200; *Positive Control:* Normal prostate or prostate carcinoma. *Cellular Localization:* Cytoplasmic. *Intended Use:* Analyte specific reagent (ASR).

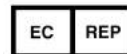
Description: Human prostein is a 553 aa protein identified by cDNA library subtraction and subsequent high-throughput microarray screening of prostate cancer. Prostein has multiple transmembrane domains. Prostein has been shown to be uniquely expressed in normal and cancerous prostatic tissues. By immunohistochemistry, prostein is expressed in the vast majority of normal and malignant prostatic tissues, regardless of grade and metastatic status. No protein expression is detected in normal and malignant tissue samples representing the great majority of essential tissues and tumors. In particular, prostein is expressed in most of poorly differentiated prostatic carcinoma, including small cell prostate carcinoma. Prostein is more specific and sensitive for prostatic carcinomas than PSA and PSAP.



Formalin-fixed, paraffin-embedded normal human prostatic tissue stained with anti-prostein antibody using peroxidase-conjugate and DAB chromogen. Note the cytoplasmic staining of benign prostate glands

Cat. #Z2006 (1.0 ml)

ZETA Corporation
65 N 1st Ave, Ste 202C
Arcadia, CA 91006, USA
Tel: (626) 355-2053
<http://www.zeta-corp.com>



Zeta Corporation

Emergo Europe B.V.
Prinsessegracht 20
2514 AP The Hague
The Netherlands
Tel: +31 70 345 8570