
Prolactin (Clone EP193) Rabbit Monoclonal Antibody

Specificity: Human, mouse, rat

Immunogen: Synthetic peptide within mouse prolactin aa 150 to the C-terminus.

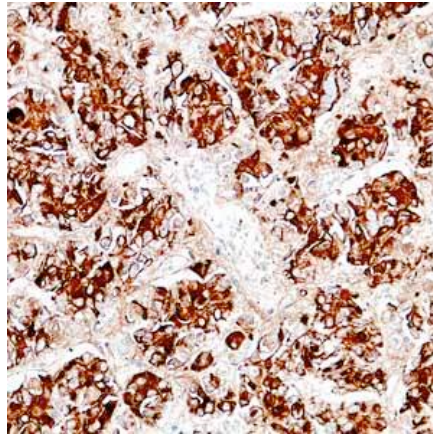
Ig Class: Rabbit IgG

Storage: Store vial at 4° C. When stored at 2-8° C, this antibody is stable for 24 months

Staining procedures: Use formalin-fixed and paraffin-embedded sections. *Retrieval conditions:* Pretreatment of deparaffinized tissue with heat-induced epitope retrieval is recommended. *Detection methods:* Polymer anti-mouse/rabbit Ig detection system. *Working dilution:* 1:50-100; *Positive Control:* Pituitary gland. *Cellular Localization:* Cytoplasmic. *Intended Use:* In vitro diagnosis (IVD).

Description: Prolactin is a peptide hormone secreted by the anterior pituitary that is necessary for the proliferation and differentiation of the mammary glands. Prolactin also acts in a cytokine-like manner and as an important regulator of the immune system. Prolactin has important cell cycle related functions as a growth, differentiating and anti-apoptotic factor. Prolactin is secreted by lactotrophs in the anterior pituitary. Prolactin producing cells make up approximately 20 percent of the pituitary. Elevated counts of these cells have been observed in pregnant women, newborns and in multiparous women. An antibody to prolactin is useful for the identification of pituitary tumors.

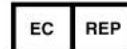
Supplied As: Purified antibody fraction from rabbit anti-serum with 0.2% BSA and 15mM sodium azide.



Formalin-fixed, paraffin-embedded human pituitary gland stained with anti-prolactin antibody using peroxidase-conjugate and DAB chromogen. Note cytoplasmic staining of some glandular cells

Cat. #Z2325 (1.0 ml)

ZETA Corporation
65 N 1st Ave, Ste 202C
Arcadia, CA 91006, USA
Tel: (626) 355-2053
<http://www.zeta-corp.com>



Zeta Corporation

Emergo Europe B.V.
Prinsessegracht 20
2514 AP The Hague
The Netherlands
Tel: +31 70 345 8570