

Podoplanin (Clone D2-40)

Mouse Monoclonal Antibody

Specificity: Human. Others not known

Immunogen: M2A

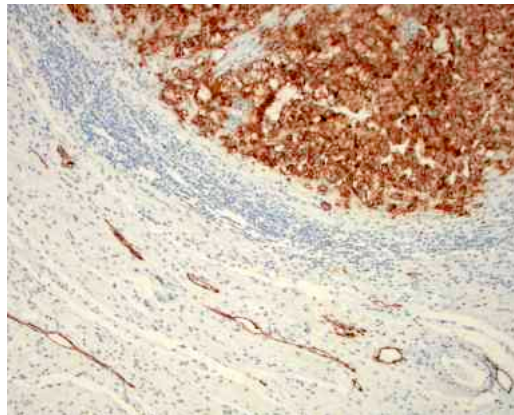
Ig Class: IgG₁

Storage: Store vial at 4°C. When stored at 2-8°C, this antibody is stable for 24 months

Staining procedures: Use formalin-fixed and paraffin-embedded sections. *Retrieval conditions:* Pretreatment of deparaffinized tissue with heat-induced epitope retrieval is recommended. *Detection methods:* Polymer anti-mouse/rabbit Ig detection system. *Working dilution:* 1:30-100; *Positive Control:* Germ cell tumor. *Cellular Localization:* Cytoplasmic. *Intended Use:* In vitro diagnosis (IVD).

Description: Monoclonal antibody, D2-40 reacts with a O-linked sialoglycoprotein (MW 40K) found on lymphatic endothelium, fetal testis and on the surface of testicular germ cell tumors. In recent studies (see datasheet) clone D2-40 have shown staining in lymphatic channel endothelium but not in the adjacent capillary. In the same study, Clone D2-40 has shown staining in endothelium of lymphangiomas whereas hemangiomas, glomus tumors, angioliomas, pyogenic granulomas, vascular malformations did not show any staining.

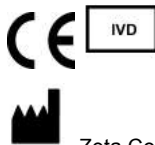
Supplied As: Antibody purified from the culture supernatant in 0.2% BSA and 15mM sodium azide.



Formalin-fixed, paraffin-embedded human testicular seminoma stained with anti-D2-40 antibody using peroxidase-conjugate and DAB chromogen. Note cytoplasmic staining of tumor cells and endothelial cells of lymphatic channels

Cat. #Z2097 (1.0 ml)

ZETA Corporation
65 N 1st Ave, Ste 202C
Arcadia, CA 91006, USA
Tel: (626) 355-2053
<http://www.zeta-corp.com>



Zeta Corporation



Emergo Europe B.V.
Prinsessegracht 20
2514 AP The Hague
The Netherlands
Tel: +31 70 345 8570

