
PTEN (Clone ZM48) Mouse Monoclonal Antibody

Specificity: Human. Others not tested

Immunogen: Recombinant full-length human PTEN protein

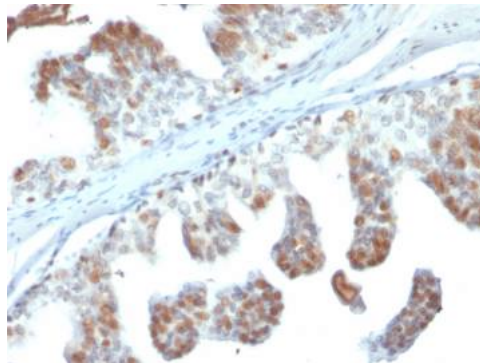
Ig Class: IgG2b/ κ

Storage: Store vial at 4°C. When stored at 2-8°C, this antibody is stable for 24 months

Staining procedures: Use formalin-fixed and paraffin-embedded sections. *Retrieval conditions:* Pretreatment of deparaffinized tissue with heat-induced epitope retrieval is recommended. *Detection methods:* Polymer anti-mouse/rabbit IgG detection system. *Working dilution:* 1:100-200; *Positive Control:* Prostate, prostate carcinoma. *Cellular Localization:* Cytoplasmic and nucleus. *Intended Use:* In vitro diagnosis (IVD).

Description: PTEN (phosphatidylinositol-3,4,5-trisphosphate 3-phosphatase) contains a tensin like domain as well as a catalytic domain similar to that of the dual specificity protein tyrosine phosphatases. It was identified as a tumor suppressor that is mutated in a large number of cancers, including sporadic brain, breast, kidney, and prostate cancers.

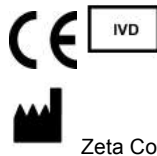
Supplied As: Purified antibody fraction from rabbit anti-serum with 0.2% BSA and 15mM sodium azide.



Formalin-fixed, paraffin-embedded human prostate carcinoma stained with anti-PTEN using peroxidase-conjugate and DAB chromogen. Note carcinoma (low right) is negative

Cat. #Z2360 (1.0 ml)

ZETA Corporation
65 N 1st Ave, Ste 202C
Arcadia, CA 91006, USA
Tel: (626) 355-2053
<http://www.zeta-corp.com>



Zeta Corporation



Emergo Europe B.V.
Prinsessegracht 20
2514 AP The Hague
The Netherlands
Tel: +31 70 345 8570