

FOLH1 / PSMA (Clone ZM163)

Mouse Monoclonal Antibody

Specificity: Human. Others not known

Immunogen: Recombinant human FOLH1 protein fragment (around aa 232-433)

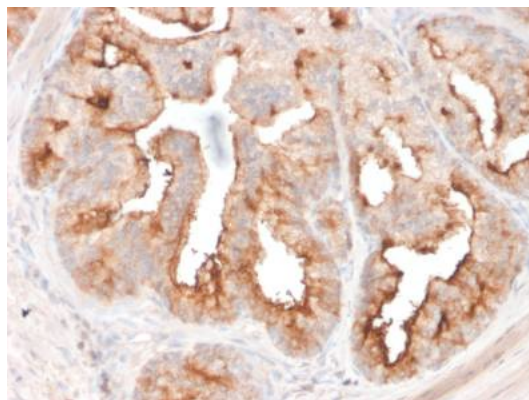
Ig Class: IgG2b/ κ

Storage: Store vial at 4°C. When stored at 2-8°C, this antibody is stable for 24 months

Staining procedures: Use formalin-fixed and paraffin-embedded sections. *Retrieval conditions:* Pretreatment of deparaffinized tissue with heat-induced epitope retrieval is recommended. *Detection methods:* Polymer anti-mouse/rabbit Ig detection system. *Working dilution:* 1:100-200; *Positive Control:* Prostate carcinoma. *Cellular Localization:* Cytoplasmic and membrane. *Intended Use:* In vitro diagnosis (IVD).

Description: Folate hydrolase 1 (FOLH1), also known as Prostate-specific membrane antigen (PSMA), is a type II transmembrane glycoprotein belonging to the M28 peptidase family. FOLH1 has two enzymatic activities, one as a prostate-specific integral membrane folate hydrolase and the other as a carboxypeptidase. In the prostate the protein is up-regulated in cancerous cells and is used as an effective diagnostic and prognostic indicator of prostate cancer.

Supplied As: Purified antibody in 0.2% BSA and 15mM sodium azide.



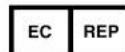
Formalin-fixed, paraffin-embedded human prostate carcinoma stained with anti-PSMA antibody using peroxidase-conjugate and DAB chromogen. Note cytoplasmic and membranous staining of tumor cells

Cat. #Z2476 (1.0 ml)

ZETA Corporation
65 N 1st Ave, Ste 202C
Arcadia, CA 91006, USA
Tel: (626) 355-2053
<http://www.zeta-corp.com>



Zeta Corporation



Emergo Europe B.V.
Prinsessegracht 20
2514 AP The Hague
The Netherlands
Tel: +31 70 345 8570