

PSMA (Clone SP29)

Rabbit Monoclonal Antibody

Specificity: Human. Others not known

Immunogen: C-terminus of PMSA

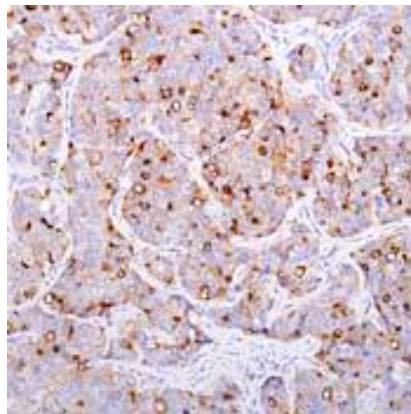
Ig Class: Rabbit IgG

Storage: Store vial at 4°C. When stored at 2-8°C, this antibody is stable for 24 months

Staining procedures: Use formalin-fixed and paraffin-embedded sections. *Retrieval conditions:* Pretreatment of deparaffinized tissue with heat-induced epitope retrieval is recommended. *Detection methods:* Polymer anti-mouse/rabbit Ig detection system. *Working dilution:* 1:50; *Positive Control:* Prostate carcinoma. *Cellular Localization:* Cytoplasmic and membrane. *Intended Use:* In vitro diagnosis (IVD).

Description: Prostate Specific Membrane Antigen (PSMA) is a surface glycoprotein with restricted expression to normal prostate tissue, primary and metastatic prostate cancer and the neovasculature of various nonprostatic epithelial malignancies. Overexpression of PSMA is correlated with high tumor grade, non-diploid tumors, and advanced tumor stage. Even though PSA is useful in identifying the prostate origin of cancers, PSMA shows moderate to strong positivity in one-half of the cells per case that show relatively poor PSA staining, and is excellent in differentiating between prostatic adenocarcinoma and urothelial carcinoma. PSMA is expressed in 94.3% to 100% of primary and 57.7% – 100% of metastatic prostatic carcinomas. PSMA is recognized as a viable target for cancer therapy.

Supplied As: Purified antibody in 0.2% BSA and 15mM sodium azide.



Formalin-fixed, paraffin-embedded human prostate carcinoma stained with anti-PSMA antibody using peroxidase-conjugate and DAB chromogen. Note cytoplasmic and membranous staining of tumor cells

Cat. #Z2186 (1.0 ml)