

PSMA (Clone EP192)

Rabbit Monoclonal Antibody

Specificity: Human. Others not known

Immunogen: Synthetic peptide corresponding to Human PSMA aa 1-150 (N terminal)

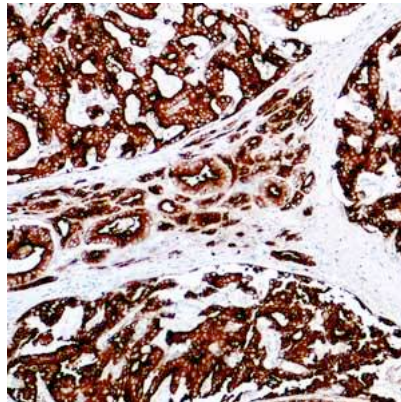
Ig Class: Rabbit IgG

Storage: Store vial at 4°C. When stored at 2-8°C, this antibody is stable for 24 months

Staining procedures: Use formalin-fixed and paraffin-embedded sections. *Retrieval conditions:* Pretreatment of deparaffinized tissue with heat-induced epitope retrieval is recommended. *Detection methods:* Polymer anti-mouse/rabbit Ig detection system. *Working dilution:* 1:50-100; *Positive Control:* Prostate carcinoma. *Cellular Localization:* Cytoplasmic and membrane. *Intended Use:* In vitro diagnosis (IVD).

Description: Prostate-specific membrane antigen (PSMA), also known as folate hydrolase 1 (FOLH1), is a type II transmembrane glycoprotein belonging to the M28 peptidase family. PSMA has two enzymatic activities, one as a prostate-specific integral membrane folate hydrolase and the other as a carboxypeptidase. Anti-PSMA labels normal prostate epithelial cells and prostate tumor cells. Although the expression of PSMA in neovasculature of a variety of solid tumors has been reported, PSMA expression is highly restricted to the prostate. It is a useful marker for prostate tumors. In prostate cancer, overexpression of PSMA is correlated with high tumor grade, non-diploid tumors, and advanced tumor stage. It can be used as an effective predictor for tumor progression in prostate cancer.

Supplied As: Purified antibody in 0.2% BSA and 15mM sodium azide.



Formalin-fixed, paraffin-embedded human prostate carcinoma stained with anti-PSMA antibody using peroxidase-conjugate and DAB chromogen. Note cytoplasmic and membranous staining of tumor cells

Cat. #Z2511 (1.0 ml)

ZETA Corporation
65 N 1st Ave, Ste 202C
Arcadia, CA 91006, USA
Tel: (626) 355-2053
<http://www.zeta-corp.com>



Zeta Corporation



Emergo Europe B.V.
Prinsessegracht 20
2514 AP The Hague
The Netherlands
Tel: +31 70 345 8570