

## PSAP (Clone PASE/4LJ) Mouse Monoclonal Antibody

**Specificity:** Human. Does not react with Dog, Rabbit, and Rat. Others-not known.

**Immunogen:** Purified prostatic acid phosphatase (PSAP) from human seminal plasma

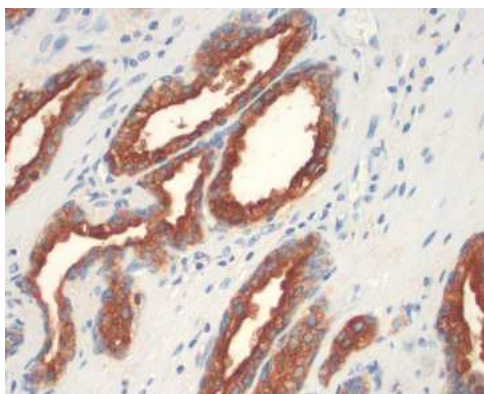
**Ig Class:** IgG1

**Storage:** Store vial at 4°C. When stored at 2-8°C, this antibody is stable for 24 months.

**Staining procedures:** Use formalin-fixed and paraffin-embedded sections. *Retrieval conditions:* Pretreatment of deparaffinized tissue with heat-induced epitope retrieval is recommended. *Detection methods:* Polymer anti-mouse/rabbit Ig detection system. *Working dilution:* 1:100-200; *Positive Control:* Normal prostate or prostate carcinoma. *Cellular Localization:* Cytoplasmic. *Intended Use:* In vitro diagnosis (IVD).

**Description:** Prostatic acid phosphatase (PSAP) is one of the two antigenic markers of prostatic carcinoma, the other being prostate specific antigen. It belongs to the kallikrein family of serine proteases and is suggested to act as a hydrolase to split phosphoryl choline in semen and as a transferase. PSAP does not inhibit the enzymatic activity of PSAP. It reacts with non-neoplastic adult and fetal prostatic glands, primary and metastatic prostatic carcinomas. It shows no cross reaction with other phosphatases.

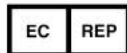
**Supplied As:** Purified antibody in 0.2% BSA and 15mM sodium azide.



*Formalin-fixed, paraffin-embedded human prostate stained with anti-PSAP antibody using peroxidase-conjugate and DAB chromogen. Note the cytoplasmic staining of benign prostate glands*

**Cat. # Z2140 (1ml)**

**ZETA** Corporation  
65 N 1<sup>st</sup> Ave, Ste 202C  
Arcadia, CA 91006, USA  
Tel: (626) 355-2053  
<http://www.zeta-corp.com>



Zeta Corporation

**Emergo Europe B.V.**  
Prinsessegracht 20  
2514 AP The Hague  
The Netherlands  
Tel: +31 70 345 8570