
Prostate Specific Antigen (PSA)(Clone ZM36) Mouse Monoclonal Antibody

Specificity: Human

Immunogen: Recombinant full-length human KLK3 protein

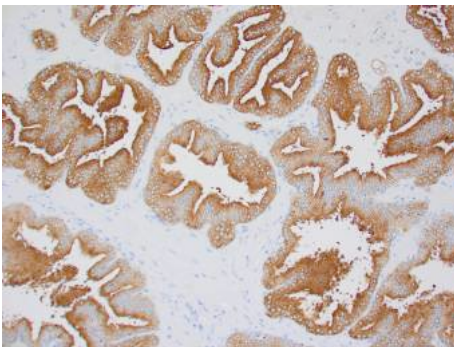
Ig Class: IgG1/ κ

Storage: Store vial at 4°C. When stored at 2-8°C, this antibody is stable for 24 months

Staining procedures: Use formalin-fixed and paraffin-embedded sections. *Retrieval conditions:* Pretreatment of deparaffinized tissue with heat-induced epitope retrieval is recommended. *Detection methods:* Polymer anti-mouse/rabbit Ig detection system. *Working dilution:* 1:100-200; *Positive Control:* Prostate. *Cellular Localization:* Cytoplasmic. *Intended Use:* In vitro diagnosis (IVD).

Description: Recognizes a single protein of 33-34kDa, identified as the prostate specific antigen (PSA). This MAb is highly specific to PSA and stains prostatic secretory and ductal epithelium in both normal and neoplastic tissues. PSA is a chymotrypsin-like serine protease (kallikrein family) exclusively produced by the prostate epithelium, and abundant in seminal fluid. PSA can be detected in the sera of patients with prostatic carcinoma. It is predominantly complexed to a liver-derived serine protease inhibitor, alpha-1-antichymotrypsin (ACT). A higher proportion of serum PSA is complexed to ACT in prostate cancer than in benign prostate hyperplasia. This MAb makes an excellent pair with MAb A67-B/E3 for PSA tests.

Supplied As: Purified antibody in 0.2% BSA and 15mM sodium azide.



References:

1. Polascik TJ, et al. *J Urol*. 1999; 162:293.
2. Alanen KA, et al. *Path Res Pract*. 1996; 192:233-237.
3. Varma M, et al. *Histopathology*. 2005; 47:1-16.

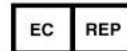
Formalin-fixed, paraffin-embedded human prostate stained with anti-PAS antibody using peroxidase-conjugate and DAB chromogen. Note cytoplasmic staining of glandular-cells

Cat. #Z2342 (1.0 ml)

ZETA Corporation
65 N 1st Ave, Ste 202C
Arcadia, CA 91006, USA
Tel: (626) 355-2053
<http://www.zeta-corp.com>



Zeta Corporation



Emergo Europe B.V.
Prinsessegracht 20
2514 AP The Hague
The Netherlands
Tel: +31 70 345 8570