
Prostate Specific Antigen (PSA)(Clone EP109) Rabbit Monoclonal Antibody

Specificity: Human

Immunogen: Seminal fluid preparation

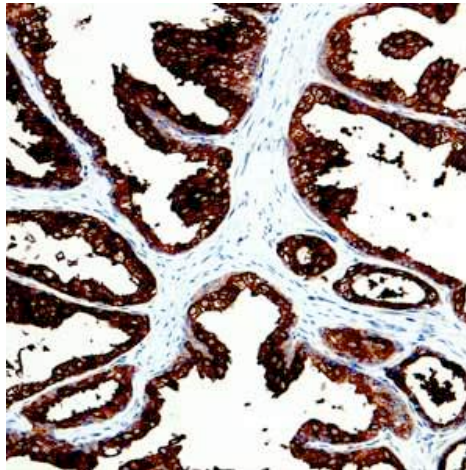
Ig Class: Rabbit IgG

Storage: Store vial at 4°C. When stored at 2-8°C, this antibody is stable for 24 months

Staining procedures: Use formalin-fixed and paraffin-embedded sections. *Retrieval conditions:* Pretreatment of deparaffinized tissue with heat-induced epitope retrieval is recommended. *Detection methods:* Polymer anti-mouse/rabbit Ig detection system. *Working dilution:* 1:50-100; *Positive Control:* Prostate. *Cellular Localization:* Cytoplasmic. *Intended Use:* In vitro diagnosis (IVD).

Description: Prostate-specific antigen (PSA) is a serine protease member of the human glandular kallikrein family. It is synthesized in the prostate ductal and acinar epithelium and diffused into serum. It is found in normal, hyperplastic, and malignant prostate tissue. Low expression of PSA has been reported in other normal or tumor tissues such as urethral, periurethral, and perianal glands, salivary duct carcinoma, and rare mammary carcinomas. Although low PSA expression has been found in other tissues, PSA is still a specific and sensitive marker for immunohistochemical analysis of tumors with prostate epithelial cell differentiation. It is valuable in the identification of metastatic tumors of prostatic origin.

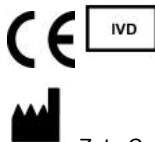
Supplied As: Purified antibody in 0.2% BSA and 15mM sodium azide.



Formalin-fixed, paraffin-embedded human prostate stained with anti-PSA antibody using peroxidase-conjugate and DAB chromogen. Note cytoplasmic staining of glandular-cells

Cat. #Z2329 (1.0 ml)

ZETA Corporation
65 N 1st Ave, Ste 202C
Arcadia, CA 91006, USA
Tel: (626) 355-2053
<http://www.zeta-corp.com>



Zeta Corporation



Emergo Europe B.V.
Prinsessegracht 20
2514 AP The Hague
The Netherlands
Tel: +31 70 345 8570