

Progesterone Receptor (Clone ZR4) Rabbit Monoclonal Antibody

Specificity: Human. Others not tested

Immunogen: Recombinant protein encoding human progesterone receptor 412-526 aa

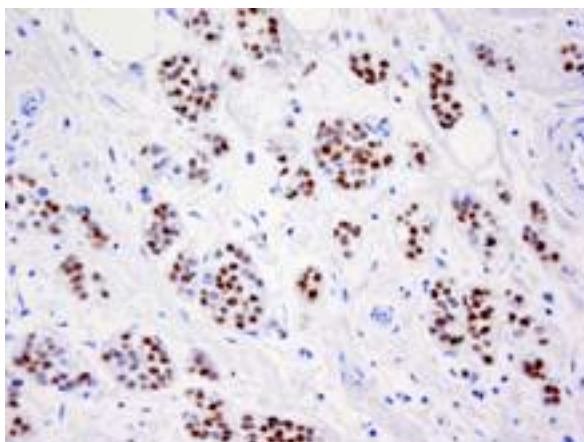
Ig Class: Rabbit IgG

Storage: For short Store vial at 4°C. When stored at 2-8°C, this antibody is stable for 24 months

Staining procedures: Use formalin-fixed and paraffin-embedded sections. *Retrieval conditions:* Pretreatment of deparaffinized tissue with heat-induced epitope retrieval is recommended. *Detection methods:* Polymer anti-mouse/rabbit Ig detection system. *Working dilution:* 1:400; *Positive Control:* Breast carcinomas. *Cellular Localization:* Nuclear. *Intended Use:* In vitro diagnosis (IVD).

Description: The progesterone receptor (PgR) is an estrogen regulated protein. It has been proposed that expression of PgR determination indicates a responsive estrogen receptor (ER) pathway, and therefore, may predict likely response to endocrine therapy in human breast cancer. A number of studies have shown that PgR determination provides supplementary information to ER, both in predicting response to endocrine therapy and estimating survival. PgR has proved superior to ER as a prognostic indicator in some studies.

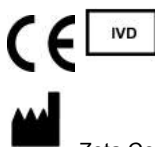
Supplied As: Tissue culture supernatant with 0.2% BSA and 15mM sodium azide.



Formalin-fixed, paraffin-embedded human breast carcinoma stained with anti-PR antibody using peroxidase-conjugate and DAB chromogen. Note the nuclear staining of tumor cells

Cat. #Z2023 (1.0 ml)

ZETA Corporation
65 N 1st Ave, Ste 202C
Arcadia, CA 91006, USA
Tel: (626) 355-2053
<http://www.zeta-corp.com>



Zeta Corporation



Emergo Europe B.V.
Prinsessegracht 20
2514 AP The Hague
The Netherlands
Tel: +31 70 345 8570