

# PLAP (Clone SP15)

## Rabbit Monoclonal Antibody

**Specificity:** Human. Others not tested

**Immunogen:** Recombinant protein encoding human Placental Alkaline Phosphatase (PLAP)

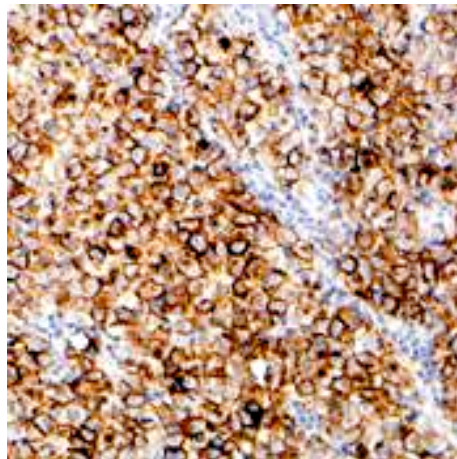
**Ig Class:** Rabbit IgG

**Storage:** Store vial at 4°C. When stored at 2-8°C, this antibody is stable for 24 months

**Staining procedures:** Use formalin-fixed and paraffin-embedded sections. *Retrieval conditions:* Pretreatment of deparaffinized tissue with heat-induced epitope retrieval is recommended. *Detection methods:* Polymer anti-mouse/rabbit Ig detection system. *Working dilution:* 1:50; *Positive Control:* Placenta or seminoma. *Cellular Localization:* Membrane. *Intended Use:* In vitro diagnosis (IVD).

**Description:** Reacts with a membrane-bound isoenzyme (Regan and Nagao type) of Placental Alkaline Phosphatase (PLAP) occurring in the placenta during the 3<sup>rd</sup> trimester of gestation. This antibody is highly specific to PLAP and shows no cross-reaction with other isoenzymes of alkaline phosphatases. It is useful in the identification of testicular germ cell tumors. Unlike germ cell tumors, PLAP-positive somatic cell tumors uniformly express epithelial membrane antigen (EMA).

**Supplied As:** Tissue culture supernatant with 0.2% BSA and 15mM sodium azide.



*Formalin-fixed, paraffin-embedded human embryonal carcinoma stained with anti-PLAP antibody using peroxidase-conjugate and DAB chromogen. Note the membrane staining of tumor cells*

**Cat. #Z2043 (1.0 ml)**

**ZETA** Corporation  
65 N 1<sup>st</sup> Ave, Ste 202C  
Arcadia, CA 91006, USA  
Tel: (626) 355-2053  
<http://www.zeta-corp.com>



Zeta Corporation

**Emergo Europe B.V.**  
Prinsessegracht 20  
2514 AP The Hague  
The Netherlands  
Tel: +31 70 345 8570