

Phosphohistone-H3 (PHH3) Rabbit Polyclonal Antibody

Specificity: Human. Others not tested

Immunogen: Synthetic peptide corresponding to phosphohistone

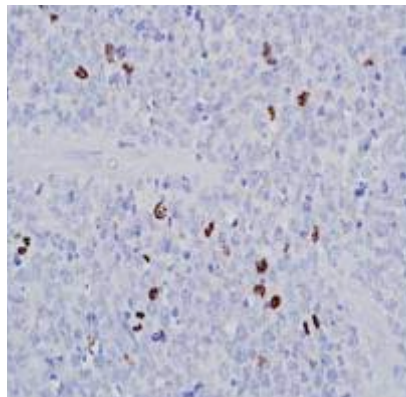
Ig Class: IgG

Storage: Store vial at 4°C. When stored at 2-8°C, this antibody is stable for 24 months

Staining procedures: Use formalin-fixed and paraffin-embedded sections. *Retrieval conditions:* Pretreatment of deparaffinized tissue with heat-induced epitope retrieval is recommended. *Detection methods:* Polymer anti-mouse/rabbit Ig detection system. *Working dilution:* 1:50-200; *Positive Control:* Tonsil. *Cellular Localization:* Nuclear. *Intended Use:* In vitro diagnosis (IVD).

Description: Phosphohistone-H3 (PHH3) is a core histone protein, which together with other histones forms the major protein constituents of the chromatin in eukaryotic cells. In mammalian cells, phosphohistone H3 is negligible during interphase but reaches a maximum for chromatin condensation during mitosis. Immunohistochemical studies showed anti-PHH3 detected specifically the core protein histone H3 only when phosphorylated at serine 10 or serine 28. Studies have also revealed no phosphorylation on the histone H3 during apoptosis. Therefore, PHH3 can serve as a mitotic marker to separate mitotic figures from apoptotic bodies and karyorrhectic debris, which may be a very useful tool in diagnosis of tumor grades, especially in CNS, skin, Gyn., Soft tissue, and GIST.

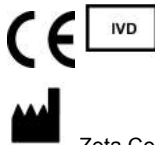
Supplied As: Purified antibody with 0.2% BSA and 15mM sodium azide.



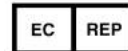
Formalin-fixed, paraffin-embedded human tonsil stained with anti-PHH3 antibody using peroxidase-conjugate and DAB chromogen. Note nuclear staining of mitotic lymphocytes

Cat #: Z2208 (1.0 ml)

ZETA Corporation
65 N 1st Ave, Ste 202C
Arcadia, CA 91006, USA
Tel: (626) 355-2053
<http://www.zeta-corp.com>



Zeta Corporation



Emergo Europe B.V.
Prinsessegracht 20
2514 AP The Hague
The Netherlands
Tel: +31 70 345 8570