
PD-1 (Clone ZM71) Mouse Monoclonal Antibody

Specificity: Human

Immunogen: Recombinant full-length human PDCD1 protein

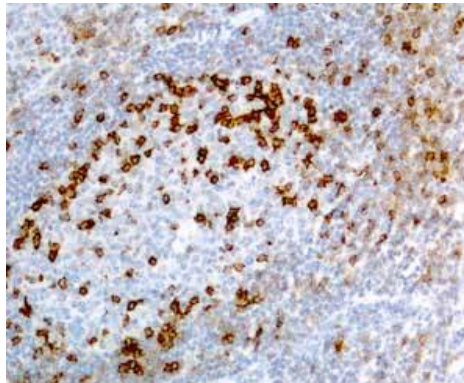
Ig Class: IgG1/κ

Storage: Store vial at 4°C. When stored at 2-8°C, this antibody is stable for 24 months

Staining procedures: Use formalin-fixed and paraffin-embedded sections. *Retrieval conditions:* Pretreatment of deparaffinized tissue with heat-induced epitope retrieval is recommended. *Detection methods:* Polymer anti-mouse/rabbit Ig detection system. *Working dilution:* 1:100-200; *Positive Control:* Lymph node. *Cellular Localization:* Nuclear. *Intended Use:* In vitro diagnosis (IVD).

Description: Programmed cell death-1 (PD-1), also known as CD279, is a type I transmembrane receptor and a member of the immunoglobulin gene superfamily. PD-1 is the receptor for PD-L1 and PD-L2. PD-1 plays a crucial role in regulating peripheral tolerance and tumor immunity. PD-1 is expressed mainly on a subset of activated T cells, B cells and myeloid cells. Increased expression of PD-1 has been reported to be associated with poor prognosis in hepatocellular carcinoma (HCC) and renal cell carcinoma. PD-1 positivity has been found in angioimmunoblastic lymphoma, but not other subtypes of T-cell and B-cell non-Hodgkin lymphoma and classic Hodgkin lymphoma. PD-1 is a useful marker for angioimmunoblastic lymphoma.

Supplied As: Purified antibody in 0.2% BSA and 15mM sodium azide.



Formalin-fixed, paraffin-embedded human tonsil stained with anti-PD-1 antibody using peroxidase-conjugate and DAB chromogen. Note cytoplasmic staining of T-cells

Cat. #Z2381 (1.0 ml)

ZETA Corporation
65 N 1st Ave, Ste 202C
Arcadia, CA 91006, USA
Tel: (626) 355-2053
<http://www.zeta-corp.com>



Zeta Corporation

Emergo Europe B.V.
Prinsessegracht 20
2514 AP The Hague
The Netherlands
Tel: +31 70 345 8570