

PCNA (Clone PC10)

Mouse Monoclonal Antibody

Specificity: Human, mouse, rat, Insect, and yeast. Others-not known

Immunogen: Recombinant rat PCNA protein

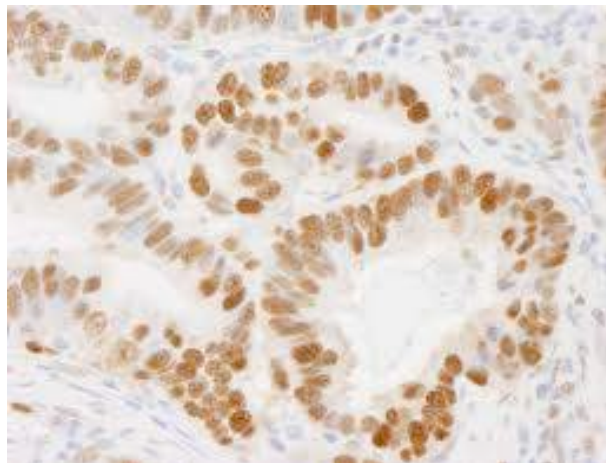
Ig Class: IgG_{2a}/κ

Storage: Store vial at 4°C. When stored at 2-8°C, this antibody is stable for 24 months

Staining procedures: Use formalin-fixed and paraffin-embedded sections. *Retrieval conditions:* Pretreatment of deparaffinized tissue with heat-induced epitope retrieval is recommended. *Detection methods:* Polymer anti-mouse/rabbit Ig detection system. *Working dilution:* 1:100-200; *Positive Control:* Tonsil, lymph node or small intestine. *Cellular Localization:* Nuclear. *Intended Use:* In vitro diagnosis (IVD).

Description: Expression of proliferating cell nuclear antigen (PCNA) or cyclin or polymerase delta auxiliary protein is elevated in the nucleus during late G₁ phase immediately before the onset of DNA synthesis, becoming maximal during S-phase and declining during G₂ and M phases. Its level correlates directly with rates of cellular proliferation and DNA synthesis. PCNA/cyclin may act as an auxiliary protein of DNA polymerase-delta to play a fundamental role in the initiation of cell proliferation.

Supplied As: Tissue culture supernatant with 0.2% BSA and 15mM sodium azide.



Formalin-fixed, paraffin-embedded colon adenocarcinoma stained with anti-PCNA antibody using peroxidase-conjugate and DAB chromogen. Note the nuclear staining of tumor cells

Cat. #Z2058 (1.0 ml)

ZETA Corporation
65 N 1st Ave, Ste 202C
Arcadia, CA 91006, USA
Tel: (626) 355-2053
<http://www.zeta-corp.com>



Zeta Corporation

Emergo Europe B.V.
Prinsessegracht 20
2514 AP The Hague
The Netherlands
Tel: +31 70 345 8570