

PAX-6 (Clone ZM157) Mouse Monoclonal Antibody

Specificity: Human. Others not tested

Immunogen: Recombinant fragment (N-terminus; aa 1-300) of human PAX6 protein

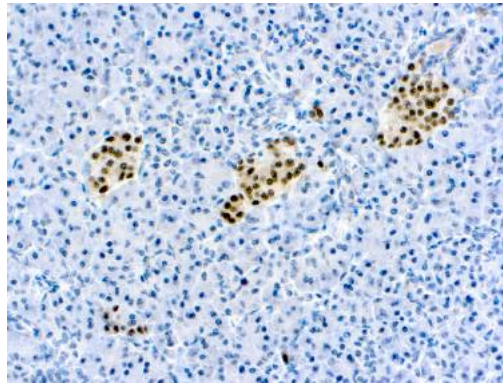
Ig Class: IgG1/ κ

Storage: Store vial at 4°C. When stored at 2-8°C, this antibody is stable for 24 months

Staining procedures: Use formalin-fixed and paraffin-embedded sections. *Retrieval conditions:* Pretreatment of deparaffinized tissue with heat-induced epitope retrieval is recommended. *Detection methods:* Polymer anti-mouse/rabbit Ig detection system. *Working dilution:* 1:100-200. *Positive Control:* Pancreas. *Cellular Localization:* Nuclear. *Intended Use:* In vitro diagnosis (IVD).

Description: Pax genes contain paired domains with strong homology to genes in Drosophila, which are involved in programming early development. Lesions in the Pax-6 gene account for most cases of aniridia, a congenital malformation of the eye, chiefly characterized by iris hypoplasia, which can cause blindness. Pax-6 is involved in other anterior segment malformations besides aniridia, such as Peters' anomaly, a major error in the embryonic development of the eye with corneal clouding with variable iridolenticulocorneal adhesions. The Pax-6 gene encodes a transcriptional regulator that recognizes target genes through its paired-type DNA-binding domain. The paired domain is composed of two distinct DNA-binding subdomains, the amino-terminal subdomain and the carboxy-terminal subdomain, which bind respective consensus DNA sequences. The human Pax-6 gene produces two alternatively spliced isoforms that have the distinct structure of the paired domain.

Supplied As: Purified antibody with 0.2% BSA and 15mM sodium azide.



Formalin-fixed, paraffin-embedded human pancreas stained with anti-PAX-6 antibody using peroxidase-conjugate and DAB chromogen. Note the nuclear staining in islet cells

Cat. #Z2470 (1.0 ml)

ZETA Corporation
65 N 1st Ave, Ste 202C
Arcadia, CA 91006, USA
Tel: (626) 355-2053
<http://www.zeta-corp.com>



Zeta Corporation



Emergo Europe B.V.
Prinsessegracht 20
2514 AP The Hague
The Netherlands
Tel: +31 70 345 8570