

PAX-6 (Clone EP341)

Rabbit Monoclonal Antibody

Specificity: Human. Others not tested

Immunogen: Recombinant fragment within Human PAX6

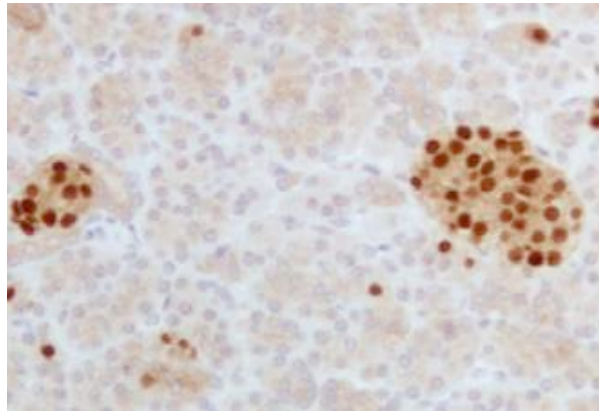
Ig Class: Rabbit IgG

Storage: Store vial at 4°C. When stored at 2-8°C, this antibody is stable for 24 months

Staining procedures: Use formalin-fixed and paraffin-embedded sections. *Retrieval conditions:* Pretreatment of deparaffinized tissue with heat-induced epitope retrieval is recommended. *Detection methods:* Polymer anti-mouse/rabbit Ig detection system. *Working dilution:* 1:50-100; *Positive Control:* Pancreas or neuroendocrine tumor. *Cellular Localization:* Nuclear. *Intended Use:* In vitro diagnosis (IVD).

Description: PAX6 is a member of the paired box family of transcription factors expressed in the developing sensory organs (including eye, nasal and olfactory tissues), central nervous and endocrine system. The expression of PAX6 is sustained in the neuroendocrine system of adults. PAX6 labels neuroendocrine cells and derived tumor cells. A recent study showed that PAX6 is positive in the majority of neuroendocrine tumors originated from pancreas, duodenum, and colon. PAX6 might be helpful in identification of neuroendocrine tumors.

Supplied As: Purified antibody with 0.2% BSA and 15mM sodium azide.



Formalin-fixed, paraffin-embedded human pancreas stained with anti-PAX-6 antibody using peroxidase-conjugate and DAB chromogen. Note nuclear staining of islet cells

Cat #: Z2312 (1.0 ml)

ZETA Corporation
65 N 1st Ave, Ste 202C
Arcadia, CA 91006, USA
Tel: (626) 355-2053
<http://www.zeta-corp.com>



Zeta Corporation



Emergo Europe B.V.
Prinsessegracht 20
2514 AP The Hague
The Netherlands
Tel: +31 70 345 8570