

PAX-5 (Clone EP156)

Rabbit Monoclonal Antibody

Specificity: Human. Others not tested

Immunogen: A synthetic peptide corresponding to residues of human PAX5 protein

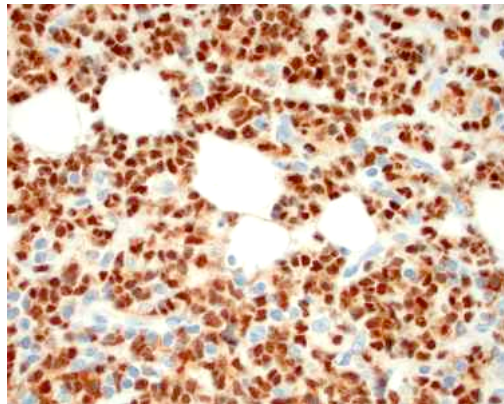
Ig Class: Rabbit IgG

Storage: Store vial at 4°C. When stored at 2-8°C, this antibody is stable for 24 months

Staining procedures: Use formalin-fixed and paraffin-embedded sections. *Retrieval conditions:* Pretreatment of deparaffinized tissue with heat-induced epitope retrieval is recommended. *Detection methods:* Polymer anti-mouse/rabbit Ig detection system. *Working dilution:* 1:50-100. *Positive Control:* Tonsil. *Cellular Localization:* Nuclear. *Intended Use:* In vitro diagnosis (IVD).

Description: Pax-5 is a B cell specific activator protein (BSAP). In the early stages of B cell development, Pax-5 influences the expression of several B-cell-specific genes, such as CD19 and CD20. Pax-5 is expressed primarily in pro-, pre-, and mature B cells, but not in plasma cells. Interestingly, Pax-5 mRNA is transiently detected in the mesencephalon and spinal cord during embryogenesis. Expression then shifts to the fetal liver and correlates with the onset of B lymphopoiesis. This indicates that Pax-5 is important in B cell development, but may also have a role in proper neuronal development.

Supplied As: Purified antibody with 0.2% BSA and 15mM sodium azide.



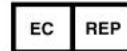
Formalin-fixed, paraffin-embedded human diffuse large B-cell lymphoma in fat stained with anti-PAX5 antibody using peroxidase-conjugate and DAB chromogen. Note the nuclear staining in lymphoma cells

Cat. #Z2275 (1.0 ml)

ZETA Corporation
65 N 1st Ave, Ste 202C
Arcadia, CA 91006, USA
Tel: (626) 355-2053
<http://www.zeta-corp.com>



Zeta Corporation



Emergo Europe B.V.
Prinsessegracht 20
2514 AP The Hague
The Netherlands
Tel: +31 70 345 8570