

p63 (Clone 4A4)

Mouse Monoclonal Antibody

Specificity: Human, mouse, and rat. Others-not known.

Immunogen: A recombinant protein derived from amino acid 1-205 of human p63

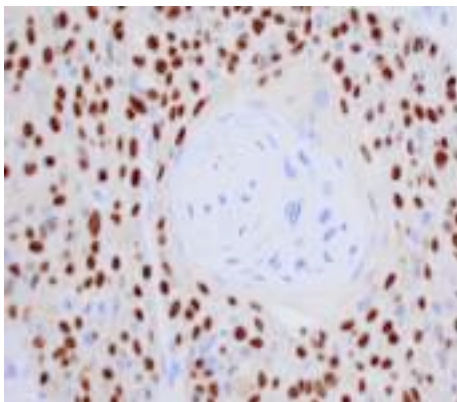
Ig Class: Mouse IgG2a/ κ

Storage: Store at 2-8°C for up to 2 years for concentrate form and 1 year for predilute form

Staining procedures: Use formalin-fixed and paraffin-embedded sections. *Retrieval conditions:* Pretreatment of deparaffinized tissue with heat-induced epitope retrieval is recommended. *Detection methods:* Polymer anti-mouse/rabbit Ig detection system. *Working dilution:* 1:50-100. *Positive control:* Skin, prostate, *Localization:* Nuclear. *Intend use:* Analyte Specific Reagent (ASR).

Description: The p63 protein, a homologue of the tumor-suppressor p53, is highly expressed in the basal or progenitor layer of many epithelial tissues. P63 is detected in prostate basal cells in normal prostate glands and PIN. However, it is negative in prostate adenocarcinoma. Thus p63 is useful as a differential marker for benign prostate glands and adenocarcinoma (negative marker). The combination of AMACR, 34 β E12, and p63 may be useful for diagnosing PIN and small focus adenocarcinoma, especially in difficult cases and cases with limited tissues. *Positive Control:* Normal prostate tissue, Squamous cell carcinoma or Skin. *Cellular Localization:* Nuclear. *Intended Use:* Analyte specific reagent.

Supplied As: Purified antibody in PBS buffer with 0.2% BSA and 15mM sodium azide.



Formalin-Fixed, paraffin-embedded human squamous cell carcinoma stained with anti-p63 using peroxidase-conjugate and DAB chromogen. Note nuclear staining of tumor cells

Cat. # Z2003 (0.5 ml, concentrate); Z2003L (1.0 ml, concentrate)

