

p27^{Kip1} (Clone SX53G8) Mouse Monoclonal Antibody

Specificity: Human, mouse, rat, and dog. Does not react with cow. Others-not known

Immunogen: Purified glutathione S-transferase (GST)-p27^{Kip1} fusion protein

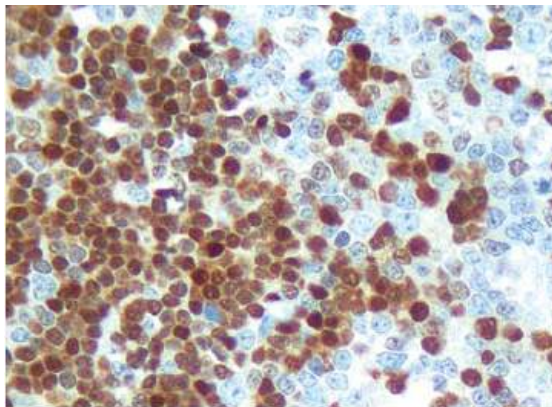
Ig Class: IgG1 / κ

Storage: Store vial at 4°C. When stored at 2-8°C, this antibody is stable for 24 months

Staining procedures: Use formalin-fixed and paraffin-embedded sections. *Retrieval conditions:* Pretreatment of deparaffinized tissue with heat-induced epitope retrieval is recommended. *Detection methods:* Polymer anti-mouse/rabbit Ig detection system. *Working dilution:* 1:50-200; *Positive Control:* Colon carcinoma. *Cellular Localization:* Nuclear. *Intended Use:* In vitro diagnosis (IVD).

Description: p27^{Kip1}, a candidate tumor suppressor gene, functions as a negative regulator of G1 progression and has been proposed to function as a possible mediator of TGF- β induced G1 arrest. Clone SX53G8 co-precipitates cdk4 in complex with p27^{Kip1} and is excellent for staining of formalin fixed tissues.

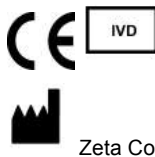
Supplied As: Purified antibody with 0.2% BSA and 15mM sodium azide.



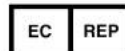
Formalin-fixed, paraffin-embedded human B-cell lymphoma stained with anti- p27 antibody using peroxidase-conjugate and DAB chromogen. Note nuclear staining of tumor cells

Cat #: Z2158 (1.0 ml)

ZETA Corporation
65 N 1st Ave, Ste 202C
Arcadia, CA 91006, USA
Tel: (626) 355-2053
<http://www.zeta-corp.com>



Zeta Corporation



Emergo Europe B.V.
Prinsessegracht 20
2514 AP The Hague
The Netherlands
Tel: +31 70 345 8570