

---

## p21<sup>WAF1</sup> (Clone DCS-60.2) Mouse Monoclonal Antibody

**Specificity:** Human, mouse, rat

**Immunogen:** Purified human recombinant fusion p21 protein

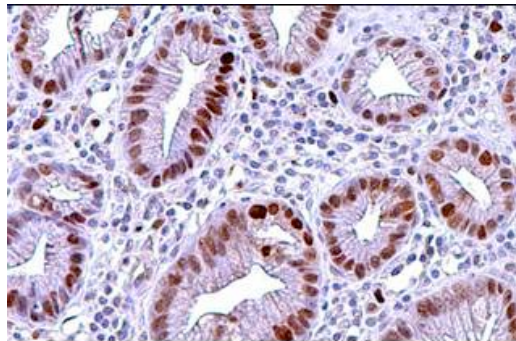
**Ig Class:** IgG1

**Storage:** Store vial at 4°C. When stored at 2-8°C, this antibody is stable for 24 months

**Staining procedures:** Use formalin-fixed and paraffin-embedded sections. *Retrieval conditions:* Pretreatment of deparaffinized tissue with heat-induced epitope retrieval is recommended. *Detection methods:* Polymer anti-mouse/rabbit Ig detection system. *Working dilution:* 1:50-200; *Positive Control:* Colon carcinoma. *Cellular Localization:* Nuclear. *Intended Use:* In vitro diagnosis (IVD).

**Description:** p21<sup>WAF1</sup>/*Cip1*/*Sdi1*/*Pic1* is a tumor suppressor protein. Expression of p21<sup>WAF1</sup> is induced by wild type, but not mutant, p53 suppressor protein. The p21<sup>WAF1</sup> protein binds to cyclin/CDK complexes and inhibits their kinase activity thereby stopping cell cycle progression. It also binds to PCNA (proliferating cell nuclear antigen) and blocks DNA replication but not the DNA repair process. Clone DCS-60.2 co-precipitates all known p21-interacting proteins including PCNA, cdc2, cdk2, and cdk4.

**Supplied As:** Purified antibody with 0.2% BSA and 15mM sodium azide.



*Formalin-fixed, paraffin-embedded human colon stained with anti- p21<sup>waf1</sup> antibody using peroxidase-conjugate and DAB chromogen. Note nuclear staining of tumor cells*

**Cat #: Z2157 (1.0 ml)**

---

**ZETA** Corporation  
65 N 1<sup>st</sup> Ave, Ste 202C  
Arcadia, CA 91006, USA  
Tel: (626) 355-2053  
<http://www.zeta-corp.com>



Zeta Corporation



**Emergo Europe B.V.**  
Prinsessegracht 20  
2514 AP The Hague  
The Netherlands  
Tel: +31 70 345 8570